

**The 16th Congress of the
Balkan Association of Nephrology,
Dialysis, Transplantation and
Artificial Organs
(BANTAO)**

Abstract Book

29 - 31 October, 2021, Tirana, Albania

Oral presentations

OP-01 Morbidity and mortality rate in hemodialysis patients with CoVid-19

Smokovska N, Stanojevska-Grankova S, Usprcov J, Kostadinovska-Bogdaska S, Nikolov I and Stojceva-Taneva O

Diaverum, North Macedonia

Introduction. Patients with end stage renal disease on hemodialysis (HD) are burdened, amongst all well-known comorbidities, with an impaired immunological defence towards large number of infectious diseases. In parallel, corona virus disease 2019 (COVID-19) pandemic has brought further challenges for the medical professionals providing maintenance hemodialysis in safeguarding the patients while providing clinical care.

Methods. Retrospective analysis was conducted in a single HD center during period of 12 months, from October 1, 2020 till September 30, 2021. Patients' demographic and clinical characteristics were analyzed for morbidity and mortality risks.

Results. Out of the 207 patients who were treated during the observational period, 47(23%) patients were affected by COVID-19, 20(42.6%) females and 27(57.4%) males at mean age of 67.3±10.9 years. The hospitalization rate among patients with COVID-19 was 38.2% and the overall mortality was 28% (72.2% in hospitalized patients). There was significance regarding age ($p=0.04$) for increased mortality, but not hospitalization. Sex of the patients showed no significance in hospitalization ($p=0.89$) and mortality risks ($p=0.74$). Charlson comorbidity index in the study population was 6.6±2.9, but was significantly higher in hospitalized patients 7.8±3.1 ($p=0.03$) and died due to COVID-19 ($p=0.004$). Karnofsky score was 70.4±18.4%, and showed no significant impact in hospitalization 64.71% ($p=0.06$) and mortality rate 66.67% ($p=0.21$).

Conclusion. Morbidity and mortality risk in HD patients affected by COVID-19 are higher than for the general population. In our cohort, age was associated with an increased risk for morbidity and mortality, and sex of the patients' had no influence. However, COVID-19 patients who were hospitalized or died had higher Charlson comorbidity index.

OP-02 Nonadherence to dietary and fluid program among patients undergoing haemodialysis

Gjyzari A, Rrezhda A and Shehu E

University Hospital Center "Mother Tereza", Tirana, Albania

Introduction. For end-stage renal disease (ESRD), patients on a hemodialysis (HD) nutritional regime focusing

on diet and fluid intake is recommended. Nonadherence to the suggested program is associated with worse outcomes.

Methods. This cross-sectional survey was conducted to determine the prevalence of nonadherence to the dietary and fluids restrictions among ESRD on HD patients during March-April 2021. Each participant was interviewed and their medical records reviewed to obtain relevant socio-demographic and clinical data. The mean inter-dialytic weight gain (IDWG) was calculated for one month prior to the date of a questionnaire for each patient. NA to fluid restriction was defined as a mean IDWG in the past month >5.7% of the dry weight, NA to dietary restriction as a predialysis serum phosphorus >5.5 mg/dl in a patient on phosphate binders and who is well-nourished.

Results. A total of 81(67% male) HD patients were included. Mean age was 53±12 years (range 22-77); The median dialysis vintage 6.2±3.9 years; Mean Body Mass Index (BMI) 24.5±3.9 kg/m²; mean IDWG 3.03±0.8 kg; mean serum albumin level 3.9±0.3 g/dl; mean serum phosphor level 5.4±1.4 mg/dl. NA prevalence was (13/81) 16% to fluid restriction, (39/81) 47.6% to dietary restriction. According to each patient interview, only 7% find it impossible to follow the fluid restriction program, and (26) 32% to dietary restrictions. Comorbidity (arterial hypertension and diabetes mellitus) were independently associated with NA to dietary restrictions (OR: 3.46, 95% CI: 0.99-12.11; $p=0.052$). No factor was associated with NA to dietary restrictions and HD sessions.

Conclusion. Regular counseling to HD patients and family members according to diet and fluid restrictions program is needed, especially for patients with comorbidities.

OP-03 Sleep disturbance, depression and anxiety in hemodialysis patients in COVID-19 pandemic

Parmaksiz ET¹, Parmaksiz E² and Sancaktepe S¹

Prof. Dr. Ilhan Varank Training and Research Hospital, Chest Diseases, Istanbul, Turkey; ²Kartal Dr. Lutfi Kırdar City Hospital, Nephrology, Istanbul, Turkey

Introduction. COVID-19 has not only threatened physical health but has also grown as a burden on public health, economics, and mental well-being. We aimed to assess symptoms of anxiety, depression, and sleep disturbances among HD patients during the COVID-19 pandemic and determine factors associated with psychological distress.

Methods. In this observational, cross-sectional study, HD patients were asked to fill out a questionnaire about socio-demographic factors, education level, employment and economic status, and marital status. They were asked about worries regarding the COVID-19 infection,

whether COVID-19 had infected them, admitted to hospital, or the ICU. Each participant was delivered Pittsburgh Sleep Quality Index (PSQI), Beck Depression Inventory (BDI), and Beck Anxiety Inventory (BAI).

Results. The mean age of 58 patients was 50.9 ± 14.6 years, and 29 (50%) were males; 19 (32.8%) had been infected with COVID-19, and 10 (15.5%) were admitted to the hospital. Fifteen patients had household contacts who had been infected with SARS-CoV-2, and four patients had household contacts who died. Most (69%) have reported unaffected by the COVID-19 news, while 29% have said that media increased their worries. 77.6% have reported that they were unemployed, and seven (12%) have either lost their jobs or were negatively affected. Sleep quality was poor ($PSQI \geq 5$) in majority ($n=36, 59\%$). Having COVID-19 was found to harm sleep quality. Poor sleep quality was seen in 68.4% of COVID-19 survivors, whereas this ratio was 59% in participants for whom SARS-CoV-2 had not been infected.

Conclusion. The pandemic has affected the lives of HD patients in health, social, or economic respects. The sleep quality seems to be negatively influenced by COVID-19.

OP-04 Are C4D, nephrin, and wt1 expressions important in the differential diagnosis between focal segmental glomerulosclerosis and minimal change disease

Akcali E¹, Turgutalp K¹, Karabulut YY², Eser ZE¹, Mistik OA², Yilmaz BC³, Bardak S⁴, Ozturk S⁵, Demir S¹, and Kiykim AA¹

¹Mersin University Faculty of Medicine, Department of Internal Medicine, Division of Nephrology, Mersin, Turkey, ²Mersin University Faculty of Medicine, Department of Pathology, Mersin, Turkey, ³Mersin University Faculty of Medicine, Department of Histology and Embryology, Mersin, Turkey, ⁴Burhan Nalbantoglu State Hospital, Nephrology Department Nicosia, Turkish Republic of Northern Cyprus, ⁵Istanbul University, Istanbul Faculty of Medicine, Department of Internal Medicine, Department of Nephrology, Istanbul, Turkey

Introduction. Focal Segmental Glomerulosclerosis (FSGS) and Minimal Change Disease (MCD) is the most common seen glomerulonephritis. Differential diagnosis between FSGS and MCD by light microscopy cannot be made at some time and electron microscopy (EM) is needed for differential diagnosis. However, in some cases, EM may not be sufficient for differential diagnosis. A new marker needed to diagnose FSGS and MCD This study aims to determine which of the glomerular C4d, nephrin staining is specific and sensitive for FSGS and MCD.

Method. The retrospective study included patients with FSGS, MCD who could not differentiate between FSGS and MCD. The patients were divided into three groups. Group 1: FSGS patients, Group 2: patients with

normal IM but whose difference between FSGS and MCD could not be differentiated, and group 3: MCD patients. All biopsy materials of all patients were stained with C4d, WT1, nephrin. The specificity, sensitivity, positive predictive value (PPV), negative predictive value (NPV) of C4d, WT1, nephrin in the diagnosis of FSGS and MCD were evaluated.

Results. C4d staining in group 1 was significantly higher compared to group 2 and group 3 ($p < 0.05$). Nephrin was showed significantly more staining in group 3 patients than group 1 ($p < 0.05$). C4d was found to be associated with the presence of global or segmental sclerosis in the glomeruli, adhesion to the Bowman's capsule ($p < 0.05$). The specificity and sensitivity of C4d in FSGS patients were 85%, 73.9%, while it was 26.1% and 15.4% in MCD. Specificity and sensitivity of nephrin were 87%, 69% in MCD patients compared to 30.8% and 13% in FSGS.

Conclusion. C4d and nephrin staining appear to be very valuable in the differential diagnosis of FSGS and MCD. Studies with a large number of patients are needed in this regard.

OP-05 Eosinopenia and lymphopenia as predictor of poor outcome in dialysis patients with COVID-19

Rista E, Cadri V, Akshija I, Malaj S, Cule E, Hoxha E, Dyrnishi B and Pilaca A

Department of Nephrology, Hygeia Hospital Tirana, Albania

Introduction. The COVID-19 pandemic affects more aggressively patients with comorbidities, including dialysis patients. This study aims to identify severity and mortality markers and respective cut-offs in this group of patients.

Methods. We used the receiver operating characteristic (ROC) curve to produce sensitivity, specificity, and cut-off values. All chronic dialysis patients getting treatment in a single-center, Hygeia-Hospital-Tirana.

Results. 52 out of 170 dialysis patients were diagnosed with Covid-19. The mean age 61.5 ± 12.3 years, 65.4% men. The prevalence of Covid-19 in dialysis was 30.5%, with mortality rate of 19.2%. Mortality rate was higher in Diabetic Nephropathy patients ($p < 0.04$) and in patients with Peripheral Vascular Disease ($p < 0.01$). Risk factors for severe disease were high BMI ($p < 0.024$), high RDW ($p < 0.03$), high C-reactive protein ($p < 0.018$), high ferritin ($p < 0.021$).

ROC curves identified lymphopenia and eosinopenia, as markers of severity and mortality.

Cut-offs were chosen for Eosinopenia (EO), exitus (0.185%); Lymphopenia (LYM) exitus (13.15%); LYM severity (15.70%), and EO severity (0.31%).

Conclusion. We found eosinophils and lymphocytes in inverse relationship to the poor outcome of Covid-19 in dialysis patients. Therefore, must be aware of the

Table 1. Eosinopenia and lymphopenia in dialysis patients with COVID-19

	Asymptotic 95% Confidence Interval			Positive if Greater Than or Equal To ^a	Sensitivity	Specificity
	AUC	Lower Bound	Upper Bound			
EO % severity	0.786	0.633	0.938	0.3100	0.739	0.643
LYM % severity	0.825	0.692	0.957	15.7000	0.793	0.778
EO% exitus	0.814	0.613	1.000	0.1850	0.727	0.750
LYM% exitus	0.739	0.510	0.969	13.1500	0.800	0.857

trend of eosinophils and lymphocytes at dialysis patients infected by Covid-19 because if these two markers are progressively worsening, it indicates a higher chance of poor outcome and a high mortality rate among them.

OP-06 COVID-19 infection in kidney transplant recipients: a single center experience

Akagun T¹, Usta M² and Baylan S³

¹Giresun University Faculty of Medicine, Nephrology, Giresun, Turkey; ²Giresun University Faculty of Medicine, Biochemistry, Giresun, Turkey; ³ Giresun University Faculty of Internal Medicine, Giresun, Turkey

Introduction. Kidney transplant recipients appear to be at exceptionally high risk for critical COVID-19 illness due to chronic immunosuppression and coexisting conditions. This study aims to present the clinical characteristics and outcomes of our hospital kidney transplant recipients hospitalized due to COVID-19 infection.

Methods. In our retrospective, observational study, COVID-19 PCR positive 20 patients hospitalized with COVID-19 pneumonia were evaluated with demogra-

phics, laboratory data, treatment, and outcome. The prognostic nutritional index (PNI) calculated using the serum albumin concentration, and total lymphocytic count were also evaluated. All patients were treated with favipiravir+low molecular weight heparin; laboratory tests were recorded before and after favipiravir treatment.

Results. Of 20 patients, 12 were male. A total of 12/20 (60%) patients survived. All patients were treated with favipiravir; laboratory tests were recorded before and after favipiravir treatment. The clinical parameters of patients are shown in Table-1 and Table-2. The mean PNI of the patients who survived was higher than patients who were exits.

Conclusion. The eight patients who died were older, had lower PNI and higher NLR (Neutrophil/Lymphocyte Ratio), procalcitonin, and CRP levels. Hospitalized kidney transplant recipients with COVID-19 have higher rates of mortality. PNI on admission exhibited good predictive performance and may be a useful clinical marker that can be used for estimating survival in COVID-19 patients.

Table 1. Clinical and laboratory findings of patients at the time of hospital admission

	Discharged n= 12	Dead n=8	p
Age	45.2±12.7	60.6±10.3	0.011
Gender (male/female)	8/4	4/4	0.648
Lenght of hospital stay (day)	7 (1-12)	15 (8-25)	0.057
PNI	43.8 (37.8-48.3)	36.7 (34.8-38.5)	0.043
WBC, x10 ⁹ /L	5.8±3.58	7.28±5.41	0.427
Neutrophil, x10 ⁹ /L	3.82 (2.24-5.37)	5.22 (2.49-7.93)	0.305
Lymphocyte, x10 ⁹ /L	0.96 (0.64-1.25)	0.44 (0.25-0.96)	0.157
Creatinine, mg/dL	1.24 (0.96-2.28)	2.35 (1.73-4.12)	0.123
NLR (Neutrophil/Lymphocyte Ratio)	5.56 (2.66-8.52)	11.25 (6.91-23.27)	0.020
Hemoglobin (g/dL)	14.0±1.79	11.3±1.17	0.005
LDH, U/L	254 (205-274)	256 (197-522)	0.515
Troponin T, ng/mL	0.017 (0.013-0.028)	0.041 (0.027-0.062)	0.006
Procalcitonin, ng/mL	0.091 (0.052-0.104)	0.345 (0.207-1.118)	0.008
Ferritin, ng/mL	462 (192-1060)	895 (395-2000)	0.238
D-dimer, µg/L	335 (198-484)	348 (266-407)	1.000
CRP, mg/L	17.5 (7.2-41.9)	59.0 (41.4-111.5)	<0.010

Table 2. Laboratory findings of the patients after favipiravir treatment

	Discharged n= 12	Dead n=8	p
PNI	45.4 (35.3-56.9)	26.5 (22.6-31.3)	0.003
WBC, x10 ⁹ /L	6.91±1.64	12.57±9.98	0.082
Neutrophil, x10 ⁹ /L	4.87 (4.14-6.07)	10.96 (4.67-12.93)	0.069
Lymphocyte, x10 ⁹ /L	1.11 (0.96-2.00)	0.40 (0.17-0.80)	0.005
Hemoglobin (g/dL)	13.8±1.89	10.1±1.53	< 0.0001
NLR	6.88 (4.49-7.72)	21.39 (8.73-39.01)	0.033
CRP (mg/dL)	10.9 (5.4-21.2)	96.0 (63.3-302.8)	< 0.0001
Creatinin (mg/dL)	1.03 (0.92-1.81)	2.96 (1.52-3.79)	0.012
LDH, U/L	275 (213-366)	513 (351-799)	0.011
Troponin T, ng/mL	0.017 (0.013-0.045)	0.103 (0.073-2.313)	0.004
Procalcitonin, ng/mL	0.056 (0.039-0.085)	1.450 (0.152-4.430)	0.006
Ferritin, ng/mL	305 (177-1494)	2000 (963-2000)	0.042
D-dimer, µg/L	1088 (569-2013)	5901 (1335-7771)	0.073

OP-07 Are renal prognostic markers different in patients with exostosin1/2 positive and negative in membranous lupus nephritis? Single center experience in Turkey

Eser ZE¹, Turgutalp K¹, Karabulut YY², Akcali E¹, Kose EC², Balli E³, Bardak S⁴, Demir S¹ and Kiykim AA¹

¹Department of Internal Medicine; ²Department of Pathology, Mersin, Turkey; ³Department of Histology and Embryology, Mersin University, School of Medicine, Turkey, ⁴Dr Burhan Nalbantoglu State Hospital, Nephrology Department Nicosia, Turkish Republic of Northern Cyprus

Introduction. Exostosin1/exostosin2 (EXT1/EXT2) are new antibodies detected in MLN and new research are needed on these markers. The aim of this study is to determine whether renal prognostic markers differ in EXT1/EXT2 positive and negative patients with MLN and relationships with these markers.

Methods. Single-center, retrospective 18 months, observational study, class 5 MLN patients aged 18 years and older were included in the study. The outcome of the study was determined as complete remission, partial remission, need for renal replacement therapy (RRT) and exitus. Group 1: EXT1/EXT2 positive, group 2: EXT1/EXT2 negative patients. Light and electron microscopy findings and laboratory parameters were evaluated in EXT1/EXT2 positive and negative patients.

Results. Group 1: n=11, group 2: n=7 patients. EXT1/EXT2 negative patients have a higher number of sclerotic glomeruli, interstitial fibrosis, and a higher amount of proteinuria than positive patients (p<0.05). EXT1/EXT2 negative patients had significantly lower C3 and C4 levels than positive patients (p<0.05). EXT1/EXT2 negative patients had a higher RRT or exitus rate within 18 months than positive patients (p<0.05). In contrast, EXT1/EXT2 positive patients had a higher rate of achieving complete or partial remission within 18 months than negative patients (p<0.05).

Conclusion. EXT1/EXT2 negative class 5 MLN patients have more poor renal prognostic indicators than positive patients. RRT or exitus rate is higher in EXT1/

EXT2 negative patients than positive patients. However, more randomized controlled studies are needed.

OP-08 May ischemia modified albumin be a predictor in diagnosis of contrast induced nephropathy?

Tanrisev M¹, Topaloglu O², Demir B², Ekinçi F², Uzun M² and Kurtulmus Y³

¹Health Sciences University Izmir Tepecik Training and Research Hospital, Department of Nephrology, Izmir, Turkey; ²Health Sciences University Izmir Tepecik Training and Research Hospital, Department of Internal Medicine, Izmir, Turkey; ³Adnan Menderes University Medical Faculty Department of Biochemistry, Aydın, Turkey

Introduction. "Ischemia modified albumin" (IMA) was investigated as a possible biomarker in several diseases such as vascular disorders. We aimed to reveal the possible value of IMA in predicting the development of contrast-induced nephropathy (CIN) after coronary angiography in patients with stable angina pectoris.

Methods. 106 patients who underwent coronary angiography with a diagnosis of stable angina pectoris were included in our study. Essential demographic and clinical findings and laboratory values were recorded and analyzed. Serum creatinine (SCre) levels were also measured 48hours after coronary angiography and recorded. Amount of contrast agent (CA) given during coronary angiography was recorded. The patients were divided into Two groups: CIN positive and CIN negative groups.

Results. CIN was developed in 14 patients (13%), and IMA levels were similar in CIN positive and negative groups (p>0.05). SCre (both measurements before and after CA administration) was not correlated with IMA levels. There was no association between drug usage and the development of CIN (p>0.05). Comorbidities were not associated with the development of CIN (p>0.05), except hypertension (HT). The presence of hypertension (p=0.0393) and female gender (p=0.0199) was associated with the development of CIN. Mean age was 61.3 and 52.3 in CIN positive and negative groups, respectively (p>0.05).

Conclusion. Any specific biomarker indicating CIN is not available yet. The most frequently used marker is the measurement of SCr 48 hours after administration of CA. We found IMA levels not to be a predictor for the development of CIN. Further investigations will determine the importance of IMA as a biomarker in renal failure developed after CA administration.

OP-09 Primary and secondary glomerular diseases in university Clinical Center of Republic of Srpska -results of kidney biopsies in period Banja Luka 2007-2021

Grujicic M^{1,2}

¹University Clinical Centre of Republic of Srpska, Banjaluka, ²Faculty of Medicine University of Banja Luka, Bosnia and Herzegovina

Introduction. The study aimed to show the number and pathophysiological diagnoses of patients with glomerular diseases in the University Clinical Centre of the Republic of Srpska in 2010-2021.

Methods. During this period, we performed 326 kidney biopsies under ultrasound guidance. There were 143 women and 183 men; 181 patients were between 18-60 year and 55 patients over 60 years. We performed a kidney biopsy of native kidneys, analyzed with optical microscopy and immunofluorescence. We took a sample for electron microscopy analyzed in Clinical Centre Dubrava (Croatia), due to lack of technical requirements for electronic microscopy in our center.

Results. Indications for biopsy were: nephrotic syndrome 193 patients (53,3%), nephritic syndrome 51 patients (15,6%), asymptomatic urinary abnormalities (persistent proteinuria and/or micro or gross hematuria 43 patients (13,1%), chronic renal failure (unclear cause) 26 patients (7,9%) and acute renal failure 13 patients (3,9%).

Primary and secondary glomerular diseases were diagnosed in 238 patients, primary glomerulonephritis in 138 patients (48%), and secondary glomerulonephritis in 100 patients (34,8%). The other three groups were vascular, tubulointerstitial diseases, and other findings. Primary glomerular disease: membranous GN 44 patients, IgA nephropathy 29 patients, focal segmental glomerulosclerosis 25 patients, minimal change disease 13 patients, membranoproliferative glomerulonephritis 11 patients, mesangioproliferative (non-IgA) glomerulonephritis 11 patients, primary crescentic glomerulonephritis three patients, post-streptococcal glomerulonephritis, two patients. We divided secondary glomerular diseases into three groups (modeled on the Italian registry): Group 1-immune-mediated GN: lupus nephritis 37 patients, ANCA vasculitis 23 patients, Goodpasture syndrome two patients; Group 2-dysgammaglobulinemia associated GN: amyloidosis 13 patients, light chain disease six patients and cryoglobulinemia one patient; Group 3-metabolic and hereditary glomerulonephritis: diabetic nephropathy 16 patients, thin glomerular base-

ment membrane disease one patient and Alport syndrome one patient.

Conclusion. Most frequent diagnoses were: membranous glomerulonephritis in 44 patients, lupus nephritis in 37 patients, and IgA nephropathy in 29 patients.

OP-10 Impact of prolonged hemodialysis on ejection fraction

Dobricic M¹, Pakic V¹, Arsenovic A¹, Pejovic V¹, Kuzmanovic A¹, Stevuljevic JK² and Lezaic V³

¹Special Hospital for Internal Diseases, Lazarevac, ²Department for Medical Biochemistry, Faculty of Pharmacy, Belgrade, ³Faculty of Medicine, University of Belgrade, Serbia

Introduction. Chronic heart failure (HF) is highly prevalent in dialysis patients and significantly affects morbidity and mortality. Numerous attempts to treat HF have been investigated by changing hemodialysis (HD) modalities. This pilot study aimed to check whether HD duration could impact left ventricular dysfunction and other applied therapy.

Method. HF was found in 63/96 prevalent HD patients, and they were divided into groups; Group 1-21 patients with reduced EF <50 % (HF_rEF); Group 2-42 patients with preserved EF ≥50% (HF_pEF), and the third group with 33 patients without HF. HD treatment was prolonged from 12 hours to 15 hours per week for three months in half of the patients in each group. Patients' data were collected from medical records. In addition to routine laboratory analysis, complete lipid status and oxidative stress (OS) were performed. Ultrasonographic examination was performed at the beginning and after the three months of prolonged HD.

Results. HD prolongation resulted in recovering EF >50% in 2/9 patients with HF_rEF and worsening EF <50% in 1/21 patients with HF_pEF. In subgroups without HD prolongation, five patients with HF_pEF worsened EF <50%, and one patient from group 3 developed HF_pEF. Antioxidant capacity significantly increased in groups 1 and 3. No other difference was found.

Conclusion. These findings suggest that three hours weekly HD prolongation may have a beneficial effect on EF, especially in patients with HF_rEF. OS could mediate this effect.

OP-11 Crescentic glomerulonephritis related to COVID-19 infection: case series

Yenigun EC, Cevher SK, Akturk S, Cankaya E, Keles M and Dede F

Department of Nephrology, University of Health Sciences, Ankara City Hospital, Ankara, Turkey

Introduction. Coronavirus disease 2019 (COVID-19) can lead to kidney damage by many mechanisms. Although it was reported that infection caused an insignificant increase in the frequency of acute kidney injury (AKI) in the early stages of the epidemic, the frequency increased significantly over time, especially in inten-

sive care patients. In genetically susceptible cases, COVID-19 may rarely trigger the production of anti-neutrophil cytoplasmic antibodies (ANCA) against neutrophil serine protease proteinase 3 (PR3) and myeloperoxidase (MPO) enzymes, contributing to the development/exacerbation of secondary vasculitides. With this article, we would like to draw attention to the glomerular severe damage potential of the virus with rapidly progressive kidney failure (RPGN) cases following COVID-19 infection.

Method. The data of nine patients who developed RPGN during or immediately after COVID-19 infection were evaluated retrospectively. Based on current guidelines, all patients had received pulse steroids, cyclophosphamide, and ± plasmapheresis. Patient characteristics, laboratory data, treatments are presented in Table 1.

Discussion. Acute tubular injury and collapsing glomerulopathy are the most common histopathological findings in COVID-19 cases. However, with the increase in our knowledge about COVID-19 over time, cases of RPGN associated with COVID-19 have begun to report increasingly. COVID-19 infection may be a "triggering factor" for vasculitis. Only a few cases of ANCA-positive RPGN have been reported in the literature. Although previously published case reports showed that COVID-19 might be associated with developing another crescentic glomerulonephritis, we mainly encountered cases with MPO-ANCA positivity. In the differential diagnosis of COVID-19-associated AKI, we should consider crescentic glomerulonephritis and look for clinical and laboratory clues for RPGN.

Patient	Age/Sex	Serology	Basal sCre (mg/dl)	Peak sCre (mg/dl)	Renal replacement therapy	Covid-admission time (week)	Cellular/Fibrocellular crescent %	Kidney pathology	Treatment	Plasmapheresis(session)	Follow up(month)	Final sCre (mg/dl)
1	73/F	p-ANCA	1.05	5.5	-	12	-/38	Immune complex	Cyc/Aza	+6	6	2.08
2	54/M	c-ANCA	0.67	4.1	+	12	19/42	Pauci-immune	Cyc	-		1.5
3	65/M	c-ANCA	0.9	4.8	+	6	68/8	Pauci-immune	Cyc	+7		2.7 (EX)
4	61/M	p-ANCA	0.88	1.6	-	26	12/14	Pauci-immune	Cyc	-		1.2
5	61/F	p-ANCA	1.33	6.18	+	simultaneous	33/20	Pauci-immune	Cyc/Aza	9		2
6	60/M	p-ANCA	1.06	1.88	-	18	60/26	Immune complex	Cyc	-		1.2
7	33/F	c-ANCA	0.6	4.08	-	Not known*	57/26	Immune complex	Cyc	+7	7	0.86
8	82/M	-	1.2	6.40	+	13	62/17	Immune complex	Cyc	+7	5	7.2
9	52/F	p-ANCA	0.89	5.56	+	Not known*	37/48	Immune complex	Rtx	+11	2	4.7

*Covid-19 Ig G antibody positive at the time of admission, Cyc, cyclophosphamide, Aza, azathioprine; SCre, serum creatinine; ANCA, anti antineutrophil cytoplasmic antibodies

OP-12 Comparison of serum sclerostin level and pulse wave velocity in patients with routine hemodialysis and non dialysis glomerulonephritis patients

Ozturk Y¹, Ozer H¹, Baloglu I² and Turkmen K¹

¹Necmettin Erbakan University, Meram Faculty of Medicine Department of Nephrology, ²Ömer Halisdemir University Training and Research Hospital, Department of Nephrology Nigde, Turkey

Introduction. Pulse wave velocity (PWV), one of the crucial markers of atherosclerotic disease, and the effect of sclerostin on chronic kidney disease have been shown in many studies. Studies on autoimmune kidney involvement such as glomerulonephritis are very few. Therefore, our study aimed to compare serum sclerostin level and PWV in hemodialysis patients and patients with glomerulonephritis.

Methods. 30 patients undergoing routine hemodialysis and 51 patients with glomerulonephritis proven by kidney biopsy were included. Demographic and clinical characteristics and routine biochemical parameters were recorded from the hospital information system. PWV was determined from the patients using the Mobil-o-Graph NG arteriography device. Serum sclerostin level was measured as pg/ml by the ELISA method.

Results. Thirteen female and 17 male hemodialysis patients and 20 female, 31 male glomerulonephritis patients were included. While the median serum sclerostin value of the whole group was 494.4 pg/ml, it was found to be 2177.7 pg/ml in the glomerulonephritis group, much higher than in the hemodialysis patient (235.5 pg/ml), (p<0.001). Pulse wave velocity (PWV) was higher in the glomerulonephritis group and was statistically significant (p<0.001). While there was a significant positive correlation between the sclerostin level and PWV and proteinuria, there was a significant negative correlation with age, GFR, creatinine, neutrophil, PTH, neutrophil-lymphocyte ratio.

Conclusion. We found that sclerostin and PWV levels were higher in the group with glomerulonephritis and might be associated with atherosclerosis in glomerulopathies like in HD. In addition, studies conducted in patients with glomerulopathy, albeit very few, have shown correlations between sclerostin and PWV levels and proteinuria, serum complement levels, and inflammation, and they may be clinically useful as a biomarker of disease activity.

OP-12 Peritoneal dialysis-related peritonitis: rate, clinical outcome and patients survival

Vidimliski-Dzekova P¹, Nikolov I¹, Trajceska L¹, Selim Gj¹, Gjorgjievski N¹, Stojanoska A¹, Bushljetik-Rambabova I¹, Simeonov R² and Stojkovski Lj²

¹University Clinic for Nephrology, Medical Faculty, University "SS Cyril and Methodius", Skopje, ²Acibadem Sistina Hospital, Skopje, Republic of North Macedonia

Introduction. Peritoneal dialysis-related peritonitis remains the major complication and primary challenge to the long-term success of peritoneal dialysis. The observational study aimed to analyze the peritonitis rate, the cause, the outcomes, and the association of peritonitis with the survival of patients.

Methods. Data were collected retrospectively from the medical charts. A total of 96 patients received peritoneal dialysis in our center from 1 January 1999 to 31 December 2018. The mean age of patients was 46.8±16.4 years, and the mean time receiving peritoneal dialysis was 3.5±3.1 years. The study population was divided into two groups, a group of patients (n=54) who experienced peritonitis and a group of patients free of peritonitis (n=42).

Results. The peritonitis rate was 0.47 episodes per patient-year. The majority of causative microorganisms were gram-positive bacteria (53.5%). Outcomes of episodes of peritonitis were completely resolved infection presented in 135 (84.9%) episodes, catheter removal in 18 (11.3%) episodes, and death in 6 (3.8%) episodes of peritonitis. Kaplan-Meier analysis and log-rank test revealed that there was a significant difference in survival between the groups, the group experiencing peritonitis tended to survive longer than the group that was peritonitis free (P=0.000). The peritonitis was a predictor associated with improved survival of patients, a 67% reduction in the risk of patient mortality was observed for the group experiencing peritonitis compared with the peritonitis free group (hazard ratio: 0.33, 95% CI 0.19-0.57, P=0.000).

Conclusion. The prevention and management of PD-related infections, resulted in their worldwide reduction, supporting the use of PD as a first-line dialysis modality.

OP-13 Kidney injury in thrombotic microangiopathy

Godanci V, Ramadani M and Ymeri F

University Clinical Centre of Kosovo

Introduction. Thrombotic microangiopathy clinically presents as a syndrome with hematological disorders: low platelets count, hemolytic anemia, and organ damage. While being the injured organs, the kidneys do not show characteristic monoclonal immunoglobulin deposits, but they are damaged through complement activation. The clinical appearance is very severe and life-threatening if not diagnosed and treated promptly. Thrombotic microangiopathy (TMA) was recently classified in the so-called MGRS (Monoclonal Gammopathy of Renal Significance).

Case report. We described a clinical case diagnosed with TMA. It presented with acute kidney injury, low platelet count, anemia, a very severe clinical picture, rapid deterioration toward septic shock. The clinical and laboratory findings, together with kidney involvement, were decisive for further investigations. Hypocomplementemia and ADAMTS 13 (a disintegrin and metalloproteinase with a thrombospondin type 1 motif, member 13) positivity suggested the TMA diagnosis, kidney biopsy confirmed it. The treatment with complement inhibitors was successful, and kidney function was restored.

Conclusion. The renal involvement in acute and severe clinical picture accompanied by hematological disorders must raise awareness toward all MGRS components, and in cases, with low platelet count and hypocomplementemia ADAMTS 13 positivity strongly suggests the TMA. Kidney biopsy confirmation and treatment are vital for the kidneys even after ameliorating general clinical picture and laboratory parameters because in untreated cases, the kidneys will be further damaged. In contrast, treatment with complement inhibitors restores renal function and halts the progression to chronic kidney disease.

OP-14 Prevention of CKD in albanian population

Qurku O¹ and Idrizi A²

¹Internal Medicine, Regional Hospital "Omer Nishani", Gjirokastra, ²Service of Nephrology, UHC "Mother Teresa", Tirana, Albania

Introduction. Chronic kidney disease (CKD) is a progressive pathology with an increasing trend, which affects 5-15% of the population worldwide. Meanwhile the number of patients with RRT exceeds 2.5 million and it is thought to double in 2030.

Methods. This is a retrospective study, with descriptive and analytical character. The data came from medical files of patients who have received chronic hemodialysis (HD) during 2019 in the regional hospital of Gjirokastra. The estimated parameters are expressed with mean ± SD.

Results. The study population consisted of 46 chronic patients in hemodialysis. The average age was 60.9 years with a predominance of the group 61-80 years respectively 48%. Mostly they were men (63%) while women were only 37% of the total number. Patients' survival more than 14 years was only 7%. Arterial hypertension was observed in 65% of patients while 9% suffered from diabetes mellitus. The distribution of primary diagnoses leading to end stage renal disease was: 7 polycystic kidney disease, 4 nephrosclerosis, 3 IgA nephropathy, 1 pauci-immune vasculitis, 5 chronic glomerulonephritis without kidney biopsy, 12 chronic pyelonephritis, 3 diabetic nephropathy while 11 patients had no known primary diagnosis. The most commonly used vascular access was native arterio-venous fistula in 87% of patients while 6 patients received HD through veno-central catheter. But their first vascular access at

the start of HD had been a temporary CVC in 80% of the patients.

Conclusion. Prevention of CKD should have as a priority creating an information strategy of population around CKD and HD by organizing mini-discussion sessions at the workplaces and using the media and social applications to promote an active healthy lifestyle and the importance of check-up. Besides, the study shows the importance of performing the kidney biopsy by the nephrologist as a routine procedure.

OP-15 Liver steatosis predicts better CKD in MAFLD as compared to fibrosis by transient elastography with controlled attenuation parameter

Marc L^{1,2,3}, **Mihaescu A**^{1,2,3}, **Lupusoru R**^{1,6,4}, **Grosu I**^{1,2,3}, **Gadalean F**^{1,2,3}, **Bob F**^{1,2,3}, **Chisavu L**^{1,2,3}, **Olariu N**¹, **Tucicovschi V**¹, **Timar B**^{1,5}, **Sporea I**^{1,4}, **Timar R**^{1,5} and **Schiller A**^{1,2,3}

¹"Victor Babes" University of Medicine and Pharmacy Timisoara, ²Centre for Molecular Research in Nephrology and Vascular Disease, Faculty of Medicine, "Victor Babes" University of Medicine and Pharmacy, Timisoara, ³Nephrology Clinic-County Emergency Hospital "Pius Brinzeu" Timisoara, ⁴Gastroenterology and Hepatology Clinic-County Emergency Hospital "Pius Brinzeu" Timisoara, Romania; ⁵Diabetes and Nutritional Disease Clinic-County Emergency Hospital "Pius Brinzeu" Timisoara, Romania.

Introduction. Changing the term/concept of NAFLD to MAFLD enlarges the pathology with potential chronic renal involvement and possibly changes the epidemiology of CKD associated to liver disease. Our study explores the relationship between MAFLD and CKD using TE with CAP.

Methods. We evaluated 402 diabetic patients with MAFLD and high CKD risk using TE with CAP (FibroScan®). In order to determine the influence of fibrosis and steatosis severity on CKD prediction we used the cut-off values from a published multicentric trial compared with biopsy. CKD was defined according to KDIGO 2012 guidelines.

Results. The prevalence of CKD in our group was 60.8%. Patients with CKD had higher mean LSM and CAP values than those without CKD. We found that hepatic steatosis is a better predictor of CKD risk compared to fibrosis. Univariate regression showed that CAP values > 353dB/m are predictive of CKD, and multivariate regression analysis, after adjustment according to sex, BMI, LDLc and HDLc, fasting glucose, showed that CAP values > 353 dB/m are more strongly associated with the presence of CKD compared to LSM (fibrosis) values.

Conclusion. In patients with MAFLD, CAP-assessed steatosis appears to be a better predictor of CKD risk compared to LSM-assessed hepatic fibrosis.

OP-16 COVID-19 in kidney transplant patients-our experience

Severova G, **Trajceska L**, **Nikolov I**, **Taneska AC**, **Spasovska A**, **Milenkova M**, **Bushletik Rambabova I**, **Vidimliski Dzekova P** and **Spasovski G**

University Clinic for Nephrology, Medical Faculty, University "SS Cyril and Methodius", Skopje, Republic of North Macedonia

Introduction. Kidney transplant patients have been identified as a risk category because of treatment with continuous immunosuppressive therapy. Our goal is to demonstrate the experience with COVID-19 in patients with a kidney transplant.

Methods. We studied 36 positive transplant patients (25 men), a mean age of 42 years who showed symptoms and have a positive PCR test. They were on continuous triple immunosuppressive therapy which included a steroid, mycophenolate mofetil, and a calcineurin inhibitor (cyclosporine or tacrolimus). The standard laboratory tests, including serum creatinine (SCr) from the last control, during and one month after recovery from COVID 19 were evaluated. Immunosuppressive therapy was modified or discontinued, apart from for the low steroid doses up to 15 mg. Positive chest X-ray and computed tomography were used to verify pneumonia. Further treatment was based on the recommendations for patients with COVID 19.

Results. The frequency of symptoms was: fever and fatigue (72%), loss of smell and taste (66%), muscle aches (58%), headache (36%), and diarrhea (19%). Twenty two patients needed hospitalization. Leukopenia was noted in 38%, enzyme abnormalities in 19%, high LDH in 47%, high d-dimers in 58%. 5 pts needed mechanical ventilation. Treatment included steroid therapy (27% methylprednisolone pulse) and covalent plasma in 6 patients. Significant increase in SCr before and during the disease 120 vs. 180 µmol/L (n <0.05) and an increase in the percentage of proteinuria before and after healing 25 vs. 32%. The disease was fatal in 5 patients.

Conclusion. COVID 19 affects the function of the graft and has a high percentage of fatal outcomes. Adherence to preventive measures, vaccination, and early treatment is of paramount importance to this patients population.

OP-17 Different types of anca determine different clinical phenotypes and outcome in anca associated vasculitis (AAV)

Badis K¹, **Stangou MJ**¹, **Kalpakidis S**¹, **Nikolaidou C**², **Lioulios G**¹, **Mitsoglou Z**¹, **Iatridi F**¹, **Fylaktou A**³ and **Papagianni A**¹

¹Department of Nephrology, Aristotle University of Thessaloniki, Hippokration Hospital, ²Department of Pathology, Hippokration General Hospital, Thessaloniki, ³Department of Immunology, National Peripheral Histocompatibility Center, Hippokration Hospital, Thessaloniki, Greece

Introduction. Accumulating evidence supports the use of ANCA type to classify different clinical entities. We aimed to evaluate whether the presence and type of ANCA determine different diseases, based on clinical phenotypes, renal involvement and response to treatment.

Methods. Differences in terms of clinical manifestations, disease activity, laboratory parameters and histology were recorded between patients with necrotizing glomerulonephritis (NGN) due to MPO-, PR3-ANCA (+) and ANCA (-) disease at time of diagnosis. Patients were treated with the same protocol, and followed up for 24 months, in a scheduled basis of every month for the first, and every 3 months for the second year. Primary end points were i) Combined end stage renal disease (ESRD) and/or death and ii) The presence of major or minor relapse during follow-up, and secondary end point was the combination of ESRD and reduction of eGFR $\geq 50\%$.

Results. Ninety-two patients (M/F 39/53, mean age 59.1 ± 15 years) diagnosed with NGN due to AAV, 36 (39.1%) PR3-ANCA, 39 (42.4%) with MPO-ANCA and 17 (18.5%) ANCA (-) were included. Number of involved systems differed significantly between PR3-, MPO-ANCA and ANCA (-), with only renal involvement in 3%, 25.5% and 29% of patients, 2 systems involved in 33%, 31%, 59%, and >3 systems in 64%, 43.5% and 12%, respectively, $p=0.002$. Histology classification revealed focal, crescentic, mixed and sclerotic type in 14%, 64%, 19%, 3% of PR3-ANCA (+), 8%, 28%, 18%, 46% of MPO-ANCA and 41%, 29%, 6% and 24% of ANCA (-), respectively, $p < 50\%$ e-GFR reduction in 8 (22.2%), 15 (38.5%) and 5 (29.4%) patients, respectively, $p=NS$, meaning that MPO-ANCA (+) patients showed a propensity to decline renal function. Rate of relapse was increased in the presence of PR3-ANCA (+), 14 (38.9%), 4 (11.8%) and 2 (10.3%) of PR3-ANCA (+), MPO-ANCA (+) and ANCA (-) patients, had at least one relapse during the two years follow up $p=0.006$.

Conclusion. Clinical phenotype and renal histology differ significantly between PR3-ANCA (+), MPO-ANCA (+) and ANCA (-) disease and FNGN, however, renal function outcome is similar, despite the increased rate of relapses in PR3-ANCA (+) patients.

OP-18 Hemolytic uremic syndrome-western romanian evidence

Chisavu F^{1,2}, Steflea R^{1,2}, Stroescu R^{1,2}, Doros G^{1,2} and Gafencu M^{1,2}

¹The Children's Emergency Hospital "Louis Turcanu", Timisoara, ²Victor Babes University of Medicine and Pharmacy, Timisoara, Romania

Introduction. Hemolytic uremic syndrome (HUS) represents a significant cause of acute kidney injury (AKI); 40% of the patients need an extrarenal supplementation method. Mortality decreased significantly (currently below 10%) with the improvement of renal replacement therapies.

Methods. We conducted a retrospective, observational study on all the cases of hospitalized HUS (typical and atypical) from the Children's Emergency Hospital "Louis Turcanu" from Timisoara, Romania. We included 12 cases of HUS from the last eight years, of which 9 cases of typical HUS and three atypical HUS.

Results. The age of the patients ranged from 8 months to 16 years (on average four years and three months) with a male: female ratio of 1:1.4, mainly from rural areas (66.6%). All patients with typical HUS had acute digestive symptoms with the identification of Shiga toxin in 44.4% of cases. 10 out of 12 patients required renal replacement therapy (1 PD and 9 CVVHDF). Mortality was 16.6% (2 cases of typical HUS). From our group, seven patients resumed renal function (58.3%), and two patients (16.6%) with atypical HUS remained dependent on dialysis (1 HDI and 1 DP). Deaths were associated with severe neurological damage (stroke) in the first seven days after the onset of symptoms. Due to the need to initiate renal replacement therapy (83.33% of cases), the average length of hospitalization was increased (29 days).

Conclusions. 83.3% of patients required renal replacement therapy. Atypical HUS has progressed to end-stage renal disease depending on a form of dialysis (66.6%). Furthermore, mortality among children with HUS remains high.

OP-19 Efficacy and safety of Sinovac vaccine administrated in patients undergoing hemodialysis

Akin D¹, Ozmen S², Caliskan A¹ and Tugba S¹

¹Faculty of Medicine Pamukkale University, Turkey;

²Medical Park Gebze Hospital, Turkey

Introduction. In 2019, the number of Hemodialysis (HD) patients in Turkey was 61341.

This study aimed to evaluate the protection and safety of the COVID-19 vaccine produced by Sinovac by applying each of the two doses (inactivated) by looking at the Covid-19 antibody titers in undergoing HD patients.

Methods. Patients older than 18 years of age, undergoing hemodialysis treatment, and who had not had COVID-19 before were included in the study. 220 HD patients and 638 healthcare workers as control groups were included in this study. Before and 3 \pm 1 weeks after the vaccination, blood was taken from the patients, and their IgG antibody levels against SARS-CoV-2 were measured. Those with antibody titers above 50.0 AU/ml were considered positive and those below negative.

Results. Pre-vaccine antibody levels of the patients were studied. Pre-vaccine mean antibody level was 3.5 ± 7.2 AU/ml and increased significantly three weeks post-vaccine antibody levels (mean 751 ± 1196 AU/ml) in the HD group. Post vaccine mean antibody level was 1733 ± 1888 AU/ml. The post-vaccine mean antibody level in controls was significantly higher than in HD patients ($p < 0.0001$). Although it was higher in healthy controls, post-vaccination antibody response was accep-

table in both HD patients and control groups. However, the percentage of subjects with high antibody (>1000 AU/ml) levels was significantly lower in the HD group. Our patients did not have any allergic reactions or severe side effects related to the vaccine.

Conclusion. Antibody response Sinovac vaccine is produced in 85.2% HD patients group. However, the antibody titer is not as high as in healthy controls. Therefore, HD patients may need to follow for antibody titer, and further studies are required to define the clinical consequences of this low antibody titer.

OP-20 Risk factors for COVID-19 mortality in hemodialysis patients

Tomanoski V, Gjorgjievska G, Nakovska M, Krecova V, Kjamili G, Andonoski A, Ristoska K, Kachakova A, Zvezdakovska J, Kepeska S, Micajkova-Panova M, Ferati B, Velju R, Tomanoska A, Zabzun Z, Kjamili M, Izairi S, Dauti H, Tancheva M, Trajkovska D, Jordanovska T, Stojanovska E, Dimova K, Jagupi S, Veseli L, Stojanovski F, Jakupi G, Zekiri A, Dimitrioska A and Lozanoski D Nefroplus Hemodialysis units, Republic of North Macedonia

Introduction. The global pandemic with SARS-CoV-2 virus and Covid-19 threatened hemodialysis patients as a vulnerable category with a high risk for fatal outcomes. The study aimed to determine the prevalence and risk factors for mortality in hemodialysis (HD) patients with confirmed Covid-19.

Methods. This study was retrospective, multicentric, and included all HD patients with PCR test confirmed COVID-19 over ten months from March till December 2020.

Results. From total of 631 hemodialysis patients over 10 months, 162 patients (113 males and 49 females) or 25.67% were with positive PCR test for SARS-CoV-2. The mean age was 62.47±13.14 years and HD vintage 71.93±68.01 months. Over the observed period, 38 patients with Covid-19 (25 males and 13 females) or 23.45% died. The mortality in patients aged 18-59 years was 15%, with 60-79 years 26%, and in patients with over 80 years was 50%. Clinical parameters showed that the deceased patients compared with survived patients had had statistically significant higher age (67.7±10.5 vs. 60.8±13.4 years; p=0.004), biochemical findings WBC ($9.1 \times 10^9/L \pm 4.1$ vs $6.4 \times 10^9/L \pm 3.0$; p<0.001), LDH (394U/L ±160 vs 294U/L±143; p=0.032), D-dimers (3699ng/ml ±3568 vs 2025ng/ml±2628; p=0.041), lower s-albumin (25g/L±4.0 vs 34.6g/L±6.9; p<0.001), and less hospital days (9.8±12.1 vs 16.2±14.3; p=0.04). By logistic regression model, it was determined that the presence of chronic pulmonary disease (HR=6.18; p=0.008), ICU admission (HR=5.31; p=0.01), and malignancy (HR=16.76; p=0.01) were the most predictive risk factors for mortality.

Conclusion. Our study showed that mortality is high in HD patients with Covid-19 and increases 23%, which is similar to other larger studies, like ERACODA and

ERA-EDTA registry regarding mortality of hemodialysis patients with Covid-19 (25% vs. 20%). In HD patients significant association was found for increased mortality with the presence of chronic pulmonary disease, malignancy and ICU admission.

OP-21 Histological and immunophenotypical vessel changes in chronic kidney disease

Lysitska A¹, Galanis N², Skandalos I³, Nikolaidou C⁴, Briza S⁵, Fylaktou A⁶, Lioulios G⁷, Mitsoglou Z⁷, Papadopoulou D¹, Antoniadis N⁸, Papagianni A⁷ and Stangou M⁷

¹Department of Nephrology, Papageorgiou General Hospital, Thessaloniki ²Department of Orthopedics, Papanikolaou General Hospital, Aristotle University of Thessaloniki, ³Department of Surgery, Agios Pavlos General Hospital, Thessaloniki, ⁴Department of Pathology, Hippokratia General Hospital, Thessaloniki, ⁵Department of Architecture Engineering, University of Thessaly, ⁶Department of Immunology, National Peripheral Histocompatibility Center, Hippokratia Hospital, Thessaloniki, ⁷Department of Nephrology, Hippokratia General Hospital, Aristotle University of Thessaloniki, ⁸Division of Transplantation, Department of Surgery, Hippokratia General Hospital, Thessaloniki, Greece

Introduction. Recent studies suggest the possibility of activating immune mechanisms in the onset and progression of atherosclerotic disease. The present study aimed to evaluate the role of immune mechanisms in the vessel of patients with Chronic Kidney Disease (CKD) and the association with clinical and laboratory indicators of atherosclerosis.

Methods. Patients with CKD stage V, in whom a radiocephalic arteriovenous fistula (RC-AVF) was created, were included in the study. Patients were divided in two groups, group A was consisted of patients who were on stage V, pre-dialysis, and being prepared to start on hemodialysis (HD), and those who had already been on HD for at least three years and were having a new RC-AVF formation, due to previous failure, group B. The control group included healthy volunteers who agreed to have a radial artery biopsy. The histological characteristics, inflammatory activation, and immunophenotypic alterations of the radial artery wall were estimated, and their association with the severity of calcification and atherosclerosis was studied. Also, the IMT was evaluated.

Results. Significant correlation was seen between inflammatory infiltration expression of CD3(+), CD20(+), CD68(+) cells, cellular activation [CD34(+), α-SMA(+)] cells, and calcification regulators (MPG, RANKL, OPG) with the degree of vascular calcification, and this was estimated and classified based on Verhoeff's Elastic and von Kossa staining. The presence and severity of atherosclerotic lesions in CKD patients were assessed based on the measurement of common caro-

tid intima-media thickness (IMT) on both sides of the common and internal carotid.

Conclusions. Atherosclerotic disease in CKD appears

to be directly related to inflammatory infiltration of blood vessels by T, B lymphocytes, macrophages, and myofibroblasts, as well as factors that affect calcification.

Poster presentations

PP-01 Chronic kidney disease in cancer patients, the analysis of a large oncology database from Eastern Europe

Ciorcan M¹, Chisavu L^{1,2,3}, Mihaescu A^{1,2,3}, Gadalean F^{1,2,3}, Bob F^{1,2,3}, Negru S^{1,2,6}, Boruga V^{1,6}, Schiller O⁵, Grosu I^{1,2,3}, Marc L^{1,2,3}, Chisavu F^{1,2}, Dragota Pascota R³, Apostol A¹, Ivan V¹ and Schiller A^{1,2,3}

¹"Victor Babes" University of Medicine and Pharmacy Timisoara, ²Centre for Molecular Research in Nephrology and Vascular Disease, Faculty of Medicine, "Victor Babes" University of Medicine and Pharmacy, Timisoara, ³Nephrology Clinic-County Emergency Hospital "Pius Brinzeu" Timisoara, ⁴Cardiology Clinic-County Emergency Hospital "Pius Brinzeu" Timisoara, ⁵"AVITUM" Dialysis Center, Timisoara, ⁶Oncohelp Oncology Center, Timisoara, Romania

Introduction. Kidney dysfunction is very prevalent in oncology patients and have an impact on their treatment and quality of life. The aim of our study was to analyze the prevalence of CKD in a large cohort of all-types cancer patients in a Western European Region.

Methods. We conducted an observational retrospective cohort study on 5831 consecutive, biopsy-diagnosed cancer patients between January 2019-December 2020 in the largest oncology hospital and outpatients clinic in Western Romania. In the statistical analysis 4342 subjects were included.

Results. From the 24 cancer types, the most prevalent cancers were represented by: breast (22.02%), lung (10.18%) and colonic cancer (9.51%). The prevalence of CKD (G3-G5) was 12.27% after the first year of follow-up and 13.42% in the second year. The prevalence of CKD was higher in patients with renal (50%), urinary tract (33.6%) and pancreatic cancers (19.6%) and lower in patients with colonic cancers (5.3%) and brain tumors (2.5%). At the end of our 2-year survey period, 0.7% of the cases had a eGFR around 6 ml – an indication for renal replacement therapy.

Conclusion. Oncology patients have a significantly higher prevalence of CKD compared to the general population, dependent of the age of the patients and the type of cancer. The prevalence of advanced CKD was surprisingly high (stages G4-G5PD 22.15%) one third of the CKD-G5 patients having indication for initiation of renal replacement therapy. An onco-nephrology team is a must for the best of medical care of these patients.

PP-02 Factors associated with anaemia in kidney transplant patients

Megerov P, Filipov J, Zlatkov B, Marinova I, Petrova M, Hristova L, Hatzipantelis A, and Paskalev E

Clinic of nephrology and transplantation, UMHAT "Alexandrovska", Sofia, Bulgaria

Introduction. Renal anemia is a common complication of chronic kidney disease (CKD). Anemia in kidney transplant patients has received relatively little attention in the literature, despite the high rate of recipients with anemia of 10-40% according to various studies. It is one of the most significant complications determining the quality of life of these patients. Our objective was to determine the risk factors for the development of anemia in kidney transplant patients.

Methods. The study included kidney transplant patients, a contingent of the Clinic of Nephrology and Transplantation. 590 patients aged 46.5±12.66, female/male ratio-1:1.3 were studied. Duration after kidney transplantation (KT) was from 3 month to 30 years. KT was performed from both deceased and living donor in a ratio of 1:1.8. All patients' data were from regular follow-up in 2018.

Results. Patients with anemia were n=94 (16%), of which with severe anemia (Hgb<60g/L) were n=4 (0.6%). Ratio m:f=1: 1.6. Mean age was 47.0±12.60 y. Average duration from transplantation 10±7.5 years. Significantly reduced glomerular filtration rate (eGFR=37.24 ml/min/1.73m²±19.41) was found in patients with anemia, as well as significantly higher proteinuria - 0.81g/L±0.67. Lower hemoglobin values were found at higher eGFR in women than in men. Significantly higher percentages of m-TOR inhibitors, Azathioprine and Allopurinol in patients with anemia compared to the general population.

Conclusion. Factors associated with significant anemia in KT patients are: female gender, graft function, immunosuppressive and adjunctive drug therapy.

PP-03 C3 glomerulonephritis in post transplanted patient with MGRS (case report)

Strakosha A¹, Dedej A², Nasto F^{???}, Pasko N¹, Lako S³, Berdica L⁴, and Thereska N²

¹Service of Nephrology, University Hospital Center "Mother Tereza", ²Service of Nephrology, American Hospital, ³Service of Hematology, American Hospital, ⁴Service of Anatomic Pathology, American Hospital, Tirana, Albania

Introduction. C3 Glomerulopathy includes several rare glomerulonephrites with underlying defects in the alternative pathway of the complement cascade. It is characterized by predominant C3 deposition in glomeruli due to abnormal activation of the complement system's alternative pathway. C3 GN has been reported to be associated with several systemic diseases.

Case report. We will describe a case presenting C3 GN in a patient with monoclonal gammopathy of renal significance (MGRS). A 61 years old man patient presented with gross hematuria, anemia, renal dysfunction (creatinemia 2.4 mg/dl), proteinuria 814 mg/24h. The patient had been transplanted two years ago, and was on corticosteroids, MMF, tacrolimus, and entecavir for hepatitis B. Serum protein electrophoresis showed: hypogammaglobulinemia with a small homogeneous spike-like peak. Serum kappa free light chains 32.4 mg/dl, serum lambda free light chains 9.3 mg/dl; ratio 3.4. Autoimmune tests ANA, ANCA, anti ds DNA, C3, and C4, were negative. Urine kappa light chains 26.4 mg/24h, urine lambda light chains 6.6 mg/24h. Urine kappa/lambda ratio 4. After consultation with hematologist results of bone marrow biopsy came for monoclonal gammopathy, and the FISH conclusion is the presence of t(11,14) (q13,q32), which originated from IgH/CCND1 retraction and 1q21 acquisition. Renal biopsy is C3 glomerulopathy with mesangial and diffuse endocapillary proliferation under light microscope and diffuse deposition of C3 and no immunoglobulin under an immunofluorescence microscope.

Conclusion. Monoclonal gammopathy of renal significance MGRS is a term to describe a group of hematological disorders associated with kidney disease that fail to meet the standard definitions for MM or lymphoma. In such cases, renal impairment is often linked to the underlying hematological disorder. The intention was to make a clear distinction between MGUS, a benign asymptomatic condition, and MGRS, which may be associated with significant morbidity and mortality.

PP-04 The first renal artery thrombosis treatment with percutaneous angioplasty in the Republic of Kosovo- a case report

Trajcheski T¹, Oluri E^{1,2}, Sulovari A¹, Xhafa A^{1,2}, Krasniqi S^{1,2}, Sejdiu I^{1,2}, Tolaj M^{1,2}, Martini N^{1,2}, Rama B^{1,2}, Brovina L¹

¹American Hospital Pristina, ²University Clinical Centre Pristina, Kosovo

Introduction. Renal artery thrombosis (RAT) is a rare acute organ threatening condition. It can be successfully recognized in a healthcare system that provides multidisciplinary approach. Another challenge for the health care system is the disposal of advanced interventional treatment options. We present the first case of acute RAT treated with percutaneous angioplasty in the Republic of Kosovo, diagnosed in public and successfully treated in a private institution as result of integrated health system.

Case report. A 45-year-old male presented with a complaint of sudden onset of a right flank pain for 30 hours. Laboratory results revealed high serum creatinine and lactate dehydrogenase. The angiogram revealed the right renal artery with proximal occlusion. The thrombotic occlusion was traversed by using of a coronary guidewire to the distal portion but the branch arteries

were extensively occluded with no parenchymal enhancement of the nearly total right kidney. After thrombus aspiration, bolus of GP IIb IIIa inhibitor was administered and good flow was obtained, but shortly after again diminished due to residual stenosis. So, drug eluting stent was deployed and the result was obtained. The patient's flank pain was entirely resolved after the intervention and the serum creatinine and LDH decreased to normal at fourth day. Also, hypercoagulable state work up was done, which was found to be positive for lupus anticoagulant and rheumatology consultation was recommended. The control angiogram revealed fully patent right renal artery, bilateral brachial artery occlusion, distal right femoral artery stenosis.

Conclusion. The renal artery thrombosis can be treated effectively by interventional angioplasty. It is a real health-care system challenge, especially in young developing countries.

PP-05 Avascular necrosis on both femur caused by systemic lupus erythematosus

Ktona E¹, Kostas Agnatis I², Idrizi A³ and Barbullushi M³
¹Service of Rheumatology, UHC "Mother Teresa", Tirana, Albania, ²Orthopaedic Department, University Hospital of Ioannina, Greece, ³Service of Nephrology, UHC "Mother Teresa", Tirana, Albania

Introduction. Avascular necrosis (AVN), also known as aseptic necrosis or osteonecrosis, is bone death due to compromise of blood flow that leads to bone destruction, arthralgia, and loss of function in the joint. AVN remains a significant cause of morbidity in patients with systemic lupus erythematosus (SLE).

Case report. We report a 26 years old woman, diagnosed 7 years before with Lupus Nephritis. Initial presentations included: polyarthritis, malar rash, alopecia, oral ulcers, hypertension. Immunology laboratory tests indicate positive ANA and anti-ds DNA, with decreased complement levels, negative anticardiolipin, 24 h proteinuria 1.4 g/l proteinuria and microhematuria were detected in urinalysis. Based on all these facts and the criteria of American college of Rheumatology, the diagnosis of SLE complicated with lupus nephritis was done. A pulse therapy of methylprednisolone for 3 days was started, and very good results were achieved. In the following six years she was taking prednisolone. with bilateral constant hip pain, and worsened if she walked for a long distance and did not get better with analgesic. In evaluation with MRI she had bilateral osteonecrosis of femoral heads, Stenberg classification stage III. For period of 6 months noninvasive treatment was used, but with no success. Total hip replacement was performed 6 months, and now she came again to get 2nd operation total hip replacement.

Conclusion. Patients diagnosed with SLE are at high risk for AVN, especially femoral head. Use of steroids, and/or cytotoxic medication, were associated with this phenomenon. If the osteonecrosis is caught in an early

stage, the goal of therapy is to preserve the native joint for as long as possible. However, osteonecrosis often progresses, the mainstay of treatment is surgical using either a joint-preserving procedure, if possible, or total hip arthroplasty.

PP-06 Pain management in kidney transplantation

Gavrilovska-Brzanov A¹, Dohcevic S², Stavridis S², Spasovski G³, Sreva Jovanovski M¹, and Kuzmanovska B¹
¹University Clinic for Traumatology, Orthopaedic Diseases, Anaesthesia, Reanimation, Intensive Care and Emergency Centre, ²University Clinic for Urology, ³University Clinic for Nephrology, Medical Faculty, University "SS Cyril and Methodius," Skopje, Republic of North Macedonia

Introduction. Appropriate pain management in kidney transplant recipients is required for optimal surgical results and graft survival. However, no agreement or guidelines for perioperative and postoperative pain management in kidney transplant recipients exist at this time. Therefore, we evaluated the perioperative and postoperative pain management practice in kidney transplant recipients in our country.

Methods. This observational clinical evaluation included all consecutive patients who underwent kidney transplant surgery. The primary measure of this evaluation was to assess the current analgesia management practice. The VAS score, the need for 24 hours of analgesia, and the problems and/or adverse effects of pain treatment were additional measures in this evaluation.

Results. For the period of two years, thirty patients were enrolled in this evaluation. Two different types of pain management were mainly present among anesthesiologists. Epidural analgesia and total intravenous analgesia (17 vs. 13). The VAS pain score in the epidural group was lower at rest and on movement, but only for the first 2 hours (VAS at rest, 3 vs. 4), and on movement, 4 vs. 5. At the other evaluated time points, the pain score on the VAS scale did not differ between the groups. There was also a modest difference in side effects. Patients who received epidural analgesia experienced more adverse effects than those who received total intravenous analgesia.

Conclusion. Using a personalized pain management strategy will improve patient satisfaction and transplant survival.

PP-07 Which glomerular filtration rate is more reliable in adults with common variable immunodeficiency?

Ozer H¹, Baloglu P², and Aytekin G³

¹Konya Necmettin Erbakan University, Meram Faculty of Medicine, Department of Nephrology, Konya, ²Nigde Omer Halis Demir University Training and Research Hospital, Department of Nephrology, Nigde, ³Konya Training and Research Hospital, Allergy and Immunology Department, Konya, Turkey

Introduction. There are no comprehensive prospective studies examining renal complications in common

variable immunodeficiency (CVID) patients. In this study, we compared creatinine-based estimated glomerular filtration rate (eGFR) calculation methods such as MDRD, CG and CKD-EPI with 24-hour urine creatinine clearance measurement to investigate which calculation method is more reliable and consistent in this patient group.

Methods. The records of 14 patients who had been clinically followed up at our clinic and were retrospectively reviewed. The eGFR values of the patients were measured by three different methods and compared with 24 h urine creatinine clearance.

Results. e-GFR calculated by the MDRD formula was 122.99 ± 41.22 mL/min/1.73 m², while eGFR measured by 24-hour urinary creatinine clearance was 99.64 mL/min/1.73 m². In addition, eGFR calculated by the CKD-EPI formula was 113.83 ± 26.46 mL/min/1.73 m², while eGFR calculated by the CG formula was 133.52 ± 45.35 mL/min/1.73 m². On average, there were differences of 23.9, 43.5, and 14.8 mL/min/1.73 m² in eGFR calculated by the MDRD, CG, and CKD-EPI formulas, respectively, when compared with the 24-h urine creatinine clearance (Figure 1). The correlation analysis between 24-hour urinary creatinine clearance and other formulas showed that 24-hour urinary creatinine clearance was positively correlated with MDRD, CKD-EPI and CG formulas ($r = 0.726$, $p = 0.003$; $r = 0.634$, $p = 0.015$; $r = 0.806$, $p = 0.001$; respectively).

Conclusion. We can conclude that the glomerular filtration rate calculated by 24-hour urinary creatinine clearance in patients with common variable immunodeficiency correlates with all three formulas, but the Cockcroft-Gault formula provides the closest result in terms of calculated mean eGFR.

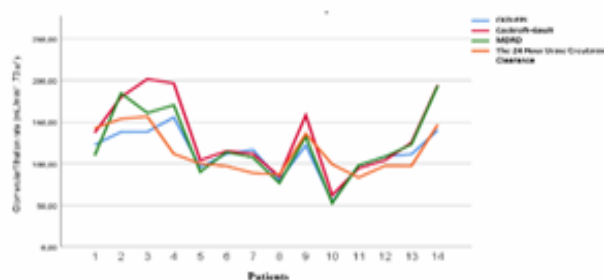


Fig. 1. Relationship between 24-hour urinary creatinine clearance and eGFR calculated by MDRD, CG, and CKD-EPI formulas

PP-08 Left ventricular structure and function in stable hemodialysis treated patients, a longitudinal multicenter cohort study

Chisavu L^{1,2}, Bob F^{1,2}, Marc L^{1,2}, Mihaescu A^{1,2}, Gadalean F^{1,2}, Grosu I^{1,2}, Schiller O² and Schiller A¹

¹Departement of Internal Medicine II-Division of Nephrology, University of Medicine and Pharmacy Timisoara, Romania; ²Avitum BBraun Romania

Introduction. Left ventricular (LV) structure and function anomalies are frequent during the CKD continuum

and are associated with increased risk of mortality. Cross section and longitudinal ultrasound data are available for advanced CKD and transition to ESKD. Less information is available about LV changes during stable, long-term hemodialysis (HD) treatment.

Methods. All stable HD patients from 9 HD centers (1034 patients, 671 males, age 58.71±12.94 years) have been enrolled in January 2015. The cohort was followed-up for 4 years, kidney transplantation or death. Yearly, two-dimensional and M-mode continuous and Pulse Doppler echocardiography were performed.

Results. During the follow-up, the prevalence of cardiovascular comorbidities significantly increased ($p < 0.0001$), coronary artery disease (CAD) from 73.5% to 88.8%, peripheral artery disease (PAD) from 29% to 40.9%, cerebral vascular disease (CVD) from 20.4% to 30.8%, heart valves calcification (VC) from 65.6% to 89.3%, left ventricular hypertrophy (LVH) from 67.6% to 76.5%. The mortality risk increased with the presence of CAD (1.59-fold), PAD (1.61-fold), CVD (1.59-fold), and VC (1.77-fold). Mortality risk was increased in those with LVEF <50% (LVEF 40-49% 1.5-fold and LVEF <40% 2.3fold). Among the survivors of the first year, LVEF varied (>5% decrease, >5% increase and +/-5% variations). More than 5% increase of LVEF was associated with higher mortality risk (crude 1.5-fold, adjusted 1.43-fold) compared to stationary EF ($p=0.001$).

Conclusion. Cardiovascular disease progresses during stable long-term HD therapy and increases mortality risk. HF becomes highly prevalent but only HF with decreased LVEF <50% is associated with increased risk of mortality.

PP-09 Acute kidney injury awareness in the paediatric population-a western romanian observational study
Chisavu F^{1,2}, Steflea R^{1,2}, Stroescu R^{1,2}, Doros G^{1,2}, Gafencu M^{1,2}, and Schiller A^{2,3}

¹The Children Emergency Hospital "Louis Turcanu", Timisoara, ²Victor Babes University of Medicine and Pharmacy, Timisoara, ³Emergency County Hospital "Pius Branzu", Nephrology Clinic, Timisoara, Romania

Introduction. Acute kidney injury (AKI) represents an important cause of morbidity and mortality among the pediatric patients. To this day the incidence of AKI among hospitalized children is unknown. With this study we would like to draw attention on the AKI awareness and thus its clinical implications.

Methods. We conducted a retrospective, observational study on the hospitalized children between 2014 and 2020. The inclusion criterion was the diagnostic of AKI according to KDIGO 2012 definition.

Results. 127457 patients were hospitalized in the period 2014-2020 in Louis Turcanu Emergency Hospital for Children, Timisoara, Romania. The incidence of AKI was 1.46% (1867 cases). AKI aware was 27.48%. Mortality rate among AKI patients was 12.8% with the rela-

tive risk of death in the AKI aware group of 2.76. The odds ratio for death in the AKI aware group was 3,31.

Conclusion. AKI is a public health problem with major impact on the mortality in the pediatric population. The awareness of AKI is low (27.48%) with almost 3 times higher mortality rate.

PP-10 Covid experience in one dialysis center in North Macedonia-Diaverum (Vizbegovo)

Misovska N, Stojkovska MZ, Nedelkovska KM, Dimitrovski DA, Miladinovska TA, Hristova H, Marinceska BN, Nedelkoska M and Stojceva Taneva O
Dialysis center Diaverum, North Macedonia

Introduction. Patients with ESKD undergoing hemodialysis therapy are vulnerable group with a high risk for developing an infectious disease because they are usually older and have multiple comorbidities. The purpose of this study is to determine the incidence and mortality of Covid-19 infection in patients visiting Center for Hemodialysis DIAVERUM Vizbegovo, the largest dialysis center in North Macedonia.

Methods. This is a retrospective analysis of all the patients treated in our dialysis unit in the period from 1.03.2020-1.10.2021. We analyzed all patients who tested positive for COVID-19 (PCR assay of the nasopharyngeal swab).

Results. In the study period 333 patient were treated in our unit. First positive detected case in our unit was on 09.06.2020 and further a total of 108 patients (32%) were confirmed positive. Reinfection has been demonstrated in three patients. Youngest patient was 17 years old, and the oldest 89 years old. The most common symptoms on presentation were fever and cough. Severe condition manifested in 50 patients (46%) and they were admitted to COVID hospitals, where 68 patients were with mild symptoms and were treated in our unit. Mortality was around 25,9% and was higher in female (57% vs 43%) and in older patients. The most common comorbidity was Hypertension (89%), followed by DM (43%), obesity (36%), AFF (25%), malignancy (25%).
Conclusion. SARS-CoV-2 has shown a high incidence and mortality rate in hemodialysis patients. The risk of mortality increases when patients require hospitalization. Age and other comorbidities like HTA are considered risk factors associated to worse prognosis in COVID-19. It is important to have high vaccination rate to reduce the need for hospitalization and mortality rate.

PP-11 Libman sachs endocarditis: as a cause of renal dysfunction in SLE

Tanrisev M¹, Calhan T², Mingsar G¹, Cabuk G³, Yasa H⁴, and Guney N⁵

¹Health Sciences University (HSU) Izmir Tepecik Training and Research Hospital, Department of Nephrology, ²HSU Izmir Tepecik Training and Research Hospital, Department of Family Medicine, ³HSU Izmir Tepecik Training and Research Hospital, Department of Cardiology,

⁴HSU Izmir Tepecik Training and Research Hospital, Department of Cardiovascular Surgery, ⁵HSU Izmir Tepecik Training and Research Hospital, Department of Pathology, Izmir, Turkey

Introduction. SLE, which causes any kind of kidney damage, can also cause damage with its cardiac effects, so it should be kept in mind.

Case report. Due to recurrent abortions, the patient diagnosed with SLE+Antiphospholipid antibody syndrome 8 years ago was referred from rheumatology for kidney biopsy. She had high creatinine levels and proteinuria. Blood test showed: SCr level 2.3mg/dl, WBC 7.9×10^9 , Hb 10.4gr/dl, PLT 192000, ANA negative; Anti dsDNA, APAs, direct Coombs test positive, C4 was low, ESR 85/h, spot urine protein/creatinine ratio was 4. There was no erythrocytes and no leukocytes found in urine. In the mean-time she had indication and was planned for mitral valve replacement. She had fatigue and shortness of breath. Echocardiography showed a nodular appearance in the mitral anterior and posterior leaflet, severe mitral insufficiency, and the valve tips were fibrocalcific. There was no growth in the blood cultures of the patient and no finding of lupus nephritis in the kidney biopsy. The patient underwent valve replacement surgery. There was no microbiological growth in the materials taken, and the material was also sent to pathology. The patient was discharged with serum creatinine level 1.4mg/dl and ESR 30/h after the operation.

Conclusion. SLE is a systemic disease, which can affect multiple organ function. In particular, it is very important to take a complete history from the patient and the perform the physical examination without skipping any steps.

PP-12 Comparison of arterial stiffness and serum biochemical and inflammatory markers in patients undergoing routine hemodialysis

Tanrisev M¹, and Ali Kaypa M²

¹Health Sciences University Izmir Tepecik Training and Research Hospital, Department of Nephrology,

²Health Sciences University Izmir Tepecik Training and Research Hospital, Department of Internal Medicine, Izmir, Turkey

Introduction. In our study, it was aimed to compare arterial stiffness with various serum biochemical and inflammatory parameters and also to determine the possible relationships between arterial stiffness and end stage renal disease (ESRD) in patients with chronic hemodialysis.

Methods. 56 patients with ESRD who underwent routine hemodialysis 3 days a week were included. Age, gender, BMI, comorbid diseases, smoking habit, biochemical parameters and measured pulse wave velocity (PWV), augmentation index (Alx), central and peripheral systolic and diastolic blood pressures (SBP-DBP), peripheral pulse pressure (PPP) data were recorded.

Results. The PWV was detected statistically significant high in all these groups: DM, HT, PTH of below 150 pg/ml group than the PTH of over 300 pg/ml group,

transferrin saturation 30-49% group than the transferrin saturation $\geq 50\%$ group, albumin below 4 mg/dl group, CaxP of below 55 group (respectively $p=0,026$; $p=0,04$; $p=0,04$; $p=0,017$; $p=0,003$; $p=0,004$). No statistically significant correlation was found between PWV and ferritin, hemoglobin, LDL, central DBP and peripheral DBP ($p=0.35$; $p=0.85$; $p=1,00$; $p=0.83$; $p=0.96$). There was also a significant positive correlation between PWV and age, BMI, central DBP, peripheral DBP and PPP ($p<0.001$; $p=0.025$; $p=0.025$; $p<0.001$; $p<0.001$). Statistically significant negative correlation was found between PWV and CaxP, PTH ($p=0.003$; $p=0.006$). Alx was significantly higher in hypertensive group and $CaxP \geq 55$ group ($p=0.021$; $p=0.026$). Central SBP peripheral SBP and PPP were positively correlated with Alx ($p=0.005$; $p<0.001$; $p<0.001$). Gender, smoking and serum calcium levels were not associated with both pulse wave and Alx.

Conclusion. According to the data obtained from this study, many variables such as age, diabetes, hypertension, serum parathormone level, serum albumin level, central systolic pressure, peripheral systolic blood pressure, peripheral pulse pressure were effective on arterial stiffness in patients with routine hemodialysis.

PP-13 The effect of medication reminder in renal transplant patients

Sayilar EI, Ucar M, Hazer B, Kavgaci N, Akdogan J, Gokbas Y and Ozkara Z

University of Ufuk, Ankara, Turkey

Introduction. The aim of this study is evaluating the effects of using "medication reminders", one of the applications on mobile phones, which have been increasingly used in recent years, for kidney transplant patients. First 6-month period is the highest risk of rejection after kidney transplantation, frequency of rejection patients who use the "medicine reminder" application will be compared with those who don't. Supporting to use applications and questioning the usage in clinical controls can increase success of treatment. In this study, we investigated effect of "medication reminder" alarms/applications, adherence to the treatment and kidney functions, in transplant patients who are multidrug users.

Methods. 85 patients who underwent kidney transplantation between Jan 2016-Sept 2020 were included. Patients were divided into two groups according to whether or not they or their relatives use "medication reminder" alarm/applications. Graft dysfunction and acute rejection were diagnosed by $>30\%$ decrease in eGFR or kidney biopsy. Modified Morisky Scale used for the research.

Results. Creatinine were statistically lower in app user patients at first and sixth months (first-month $p=0.043$ and sixth-month $p=0.049$) While the eGFR value was higher in the first month ($p=0.044$) in the app users, at the third-month ($p=0.503$) and sixth-month ($p=0.051$) no significant difference was observed. There was no significant difference in tacrolimus levels for both groups

at the first, third and sixth month (first-month $p=0.085$, third-month $p=0.351$, sixth-month $p=0.457$).

Conclusion. Most of the renal transplant patients use drugs other than the transplantation treatment, that could cause misuse. Hereby, we can reduce rejection by misuse of drugs.

PP-14 Hypothermia as concern in percutaneous nephrolithotomy

Gavrilovska-Brzanov A¹, Srceva Jovanovski M¹, Brzanov N¹, Ivanovski O², Nastasovic T³ and Kuzmanovska B¹

¹University Clinic for Traumatology, Orthopaedic Diseases, Anaesthesia, Reanimation, Intensive Care and Emergency Centre, ²University Clinic of Urology, Medical Faculty, University "SS Cyril and Methodius," Skopje, Republic of North Macedonia; ³Clinical Center of Serbia, Belgrade, Serbia

Introduction. Hypothermia is a concern for surgical patients during the perioperative period. The aim of this evaluation is to assess the effects of two different irrigation solutions on body core temperature, shivering, visual analog scale score (VAS), and patient comfort.

Methods. Twenty patients with an ASA 1 and 2 score who underwent percutaneous nephrolithotomy (PCNL) under general anesthesia were enrolled in the study. The patients were randomly divided into two groups: the room temperature irrigation fluid group, group R, (n=10) and the warm irrigation fluid (37 °C) group W, (n=10). Immediately after surgery and during the first postoperative hour, the patients' shivering, thermal comfort, VAS score, and body core temperature were monitored.

Results. All 10 patients in the R group developed hypothermia (body core temperature below 36 °C). At recovery, the W group's VAS score was considerably lower than the R group's immediately after surgery (4 vs. 6), and in the first hour post-operatively (2 vs. 5). Shivering rates were found to be lower in the W group at 20% compared to 60% in the R group. Patients in group W had higher thermal comfort than patients in group R as well.

Conclusion. Using warm irrigation solutions for PCNL reduces hypothermia, postoperative pain score and shivering considerably. As a conclusion, a warm irrigation solution is recommended for this intervention. However, more research with a bigger sample size and multi center sampling is needed to achieve more definitive conclusions with more dependability and generalizability.

PP-15 Acute kidney injury in multisystem inflammatory syndrome in children associated with COVID -19

Abazi-Emini N, Sahpazova E and Tasic V

University Children's Hospital, Medical Faculty, Skopje, Republic of North Macedonia

Introduction. Multisystem inflammatory syndrome in children (MIS-C) is recently associated with Covid-19 infection. According to Centers for Disease Control and Prevention (CDC), MIS-C is characterized by persistent fever and laboratory markers of inflammation, multior-

gan involvement and evidence of severe illness requiring hospitalization. Kidney involvement is also reported. We have analyzed data from our hospital of children diagnosed with MIS-C.

Methods. We conducted a retrospective study of children from 0-17 year old, hospitalized from November 2020 to September 2021 to University Children's Hospital, Skopje. Data are taken from patient records. All patient met criteria for MIS-C according to CDC guidelines. Renal function on admission and discharge was analyzed in all children. Children with acute kidney injury were categorized according to KDIGO criteria. Renal ultrasound and urine analysis were also analyzed.

Results. 31 children diagnosed with MIS-C were included. Acute kidney injury was present in 13% (4/31). Two of them were stage 3, one of them was stage 1 according to KDIGO criteria. The fourth child has chronic allograft nephropathy, her baseline serum increased 2.4 x baseline, categorized as stage 2. None of them required dialysis. Kidney function had good resolution in all of them, even in the child with kidney transplant serum creatinine returned to baseline values. Microscopic hematuria was present in 16% (5/31). In all children with AKI renal ultrasound was normal. 80% of children (25/31) were treated with corticosteroids and intravenous immunoglobulin.

Conclusion. In our cohort of children with MIS-C renal injury matches with reports from other centers (10-46%). Kidney function in all children had good resolution. Because the pathophysiology of kidney injury in MIS-C is not yet established, these patients need long-term follow-up.

PP-16 Recurrent hyperparathyroidism after subtotal parathyroidectomy in a patient with chronic kidney disease. A case report

Kaloshi V, Pasko N, Strakosha A, Cadri V and Barbullushi M

Service of Nephrology, University Hospital Center "Mother Tereza", Tirana, Albania

Introduction. Parathyroidectomy (PTX) is considered the best treatment of primary hyperparathyroidism (PHPT) for symptomatic disease or patients with organ damage such as presence of renal stones. Many studies have demonstrated the benefit of PTX in decreasing the progression of chronic kidney disease (CKD) and the benefits in long-term outcomes. We report here a case of recurrent hyperparathyroidism in a patient with persistent renal dysfunction, demonstrating the difficult dilemmas that can rise for the treatment.

Case report. A 49 years old male with a past history of PTX for parathyroid adenoma before 15 years, was admitted to our unit due to labile level of blood pressure, fatigue and weakness. Laboratory examinations revealed an increased serum creatinine to 4.04 mg/d in a patients referred as with stable renal function during the last year, with eGFR between 50-55 ml/min/1.73m².

The patient had increased level of Calcemia (10.8 mg/dl), with normal serum phosphate level. The level of PTH was increased to 400.3pg/ml compared to 62 pg/ml from the last evaluation. Renal ultrasound showed a reduced echogenicity of the cortex but no evidence of kidney stones. Parathyroid scintigraphy using Tc-99m sestamibi (20mCi) showed a higher tracer uptake in the inferior parathyroid sinister gland. According to these data the diagnosis of a recurrent PHPT was made in a patient with renal deterioration function probably related to duration of hypercalcemia. The decision was made to propose subtotal PTX. After the surgery, serum calcium was in normal value and PTH 48pg/ml. Although, three months after intervention serum creatinine levels remained high, 2.8 mg/dl but significantly reduced compare to before surgical treatment.

Conclusion. We present a rare case of recurrent hyperparathyroidism in a patient with a history of previous parathyroidectomy for parathyroid adenoma. In fact, this case highlights the difficult choice of surgical intervention in a patient with coexisting renal dysfunction. Therefore, the potential benefit of parathyroidectomy should be weighed against the possible major risks of intervention.

PP-17 Pregnancy and chronic kidney disease: a case report

Mumajesi S¹, Selmani M¹, Bolleku E¹, Gjonaj N¹ and Barbullushi M¹

¹University Hospital Center "Mother Teresa", Tirana, Albania

Introduction. Pregnancies in women with chronic kidney disease are always a challenge that require integrated multidisciplinary care. The obstetric outcome in women with kidney disease has been improved lately due to continuous progress in medical management of hypertension and renal disease.

Case report. We present a case of a patient with chronic renal disease admitted to the obstetrical first aid department at the 35th week of pregnancy with headache, legs edema and hypertension. Her medical history included four pregnancies (two live births and two miscarriages). According to the patient's history, she developed hypertension early at 20 weeks of pregnancy. Previously the patient was diagnosed with left kidney atrophy and chronic renal failure with serum creatinine at 1.9 mg/dl and proteinuria on dipstick (660 mg/dL). When the woman was admitted to the obstetrical department, she had high blood pressure (175/90 mmHg) and diffuse leg edema. The patient developed nephrotic range proteinuria and signs of progressive decline of renal functional. Laboratory workup revealed total serum protein (5.7 gr/dL), a reduction in serum albumin (2.3 mg/dL), and an increase in uric acid (7.9 mg/dL), serum creatinine (3.6 mg/dL) and hemoglobin levels at 9.7 mg/dL. Cesarean section was performed two days after admission. Both mother and premature baby (1600 g)

were in good and stable conditions. The patient was discharged after 6 days, her blood pressure was normal under treatment, 24-hour proteinuria reached progressively pre-pregnancy levels and serum creatinine was 3.2mg/dl.

Conclusion. Pregnancy always remains an open challenge to nephrologists. The association of pregnancy and renal failure at any degree carries a higher risk of fetal and maternal complications. The prognosis often depends on the values of serum creatinine prior to pregnancy, the degree of worsening of renal function, development of preeclampsia, nephrotic syndrome and intrauterine gestational restriction.

PP-18 A successful endovascular intervention of Nutcracker syndrome for the first time in Albania: case report

Llambro M¹, Lazaj J¹ and Rista E²

¹Department of Cardiology, ²Department of Nephrology, Hygeia Hospital Tirana, Albania

Introduction. Nutcracker Syndrome (NS) is a rare vascular disorder. This condition is caused by left renal vein (LRV) compression between aorta and superior mesenteric artery (SMA). Nutcracker Syndrome can cause hematuria, flank pain and in some cases orthostatic proteinuria.

Case Report. A 23-year-old woman was presented with intense left lumbar and pelvic pain in the emergency department (ED). The patient denied other symptoms like fever, dysuria, diarrhea/constipation. She refers that in the past few months she had been going to the ED because of this progressive abdominal pain and hematuria. A general workup was done such as complete blood cell count, renal and liver function tests which were in a normal range. However, the urinalysis showed traces of microscopic hematuria. Performed abdominal ultrasound, computed tomography and angiography that showed proximal dilatation of the LRV and inverted flow in varicose gonadal vein with important collaterals. By these findings the diagnosis of Nutcracker Syndrome was done. The patient underwent an endovascular stenting procedure, 14mmx40mm self-expanding Wallstent was implanted in the renal vein. After the procedure flank pain resolved and postoperative computed tomography with i.v. contrast showed that the stent was in a normal position.

Conclusion. Hematuria is a common urinary abnormality in kidney diseases. Nutcracker Syndrome is a rare disease that is why a high suspicion is required to detect it, not only to the relieve symptoms but more importantly to prevent chronic damage of the kidney. We reported a NS and successfully endovascular treated it with renal stenting, for the first time in Albania.

PP-19 Desensitization to rituximab of a patient with membranous nephropathy and rituximab allergy

Zoto M¹ and Rista E²

¹Department of Allergology, ²Department of Nephrology, Hygeia Hospital Tirana, Albania

Introduction. Rituximab is a monoclonal antibody, recently recommended as first choice in treatment of membranous nephropathy. Among biological agents, rituximab has the highest reported reactions during infusions. Rapid desensitization is a procedure that allows for the safe readministration of a drug after a previous hypersensitivity reaction. We aim to describe our experience with rapid desensitization to rituximab in a membranous nephropathy patient with rituximab hypersensitivity.

Case report. We present a case of a 48-year-old male patient with weight gain, lower extremity edema, arterial hypertension, and nephrotic range proteinuria. The patient was diagnosed with membranous nephropathy 14 years ago with relapses and remission of disease, despite different treatment over the years. Last year, the patient was recommended to start the treatment with rituximab. Two separated doses of 1g rituximab were administered during February 2020 with a total remission for the next 15 months. The disease relapsed, probable due to COVID infection and nephrologists decided for another treatment with rituximab. During the drug administration, the patient developed flushing and dyspnea 30 min from the start. This was defined as Grade 2 reaction according to the Brown Classification, which indicates a moderate systemic hypersensitivity reaction. Skin testing was performed 4 weeks after the reaction. Prick test with rituximab 10mg/mL and intradermal test with 1:100 to 1:1 dilution of the drug resulted negative. Because the sensitivity of skin testing with mAbs is not known, we planned a 12-step rapid drug desensitization protocol which resulted successful for our patient.

Conclusion. Rapid desensitization with Rituximab is a helpful method for drug readministration after a hypersensitivity reaction, in cases in which there are no reasonable therapeutic alternatives.

PP-20 Clinical outcomes of hospitalized COVID-19 patients with kidney disease: a single center observational study from specialized hospital of nephrology

Kovacheska Shavreska V, Shkelqim M, Taleska Matovska N, Poposki A, Ziba J and Dalipi A
Specialized Hospital of Nephrology, Struga, Republic of North Macedonia

Introduction. COVID-19 caused by SARS-CoV-2 becomes a global pandemic. Chronic kidney disease, end-stage renal disease (ESRD) patients on maintenance hemodialysis, and transplant patients are all specific and highly vulnerable to infections. This study aimed to provide evidence on COVID-19 incidence, characteristics, and mortality in CKD patients followed up in an integrated healthcare program in our hospital. The study population included CKD, CKD on MHD, and transplanted patients recruited in the Institute of Nephrology in Struga from March 2020-2021.

Methods. We present an observational study of clinical outcome of hospitalized COVID19 patients with CKD and MHD in our hospital during one year, March 2020 till March 2021, 82 in total, 31 females. Data were retrospectively analyzed from our department of dialysis database.

Results. Fifty-eight had chronic kidney disease on MHD, twenty-two were CKD (stage II-IV), and two were transplanted patients. The mortality rate was 28.2%. Ten patients were treated conservatively with no need for HD treatment. Twelve patients started treatment with hemodialysis for the first time, three of them were discontinued from HD, five were maintained on hemodialysis treatment after recovery of SARS-CoV-2 infection, and four patients passed away. Fifty-eight patients had a clinical presentation with bronchopneumonia, but the other nineteen had no pulmonary involvement. Five patients due to clinical presentation were sent to the tertiary level. It is essential to mention that seven patients had advanced stages of malignancies of various etiologies.

Conclusion. The incidence of COVID-19 among these patients was strongly related to the spread of the infection in the community, while its lethality is associated with the underlying kidney condition and comorbidities like diabetes and arterial hypertension. COVID-19 related mortality was about ten times higher than that of CKD patients without COVID. For this reason, it is urgent to offer direct protection to CKD patients by prioritizing their vaccination.

PP-21 Severe hypertension in a young man with aortic coarctation

Kuka S, Hoxha E, Marko S, Gjata M and Tase M
Department of Internal Medicine, University Hospital Center "Mother Teresa", Tirana, Albania

Introduction. Aortic coarctation is a common cardiac congenital defect. This defect affects mostly males. The classic coarctation of the aorta is located in the thoracic aorta, distal to the origin of the left subclavian artery. Aortic coarctation is found in 6-8% of all cardiac defects. Its clinical sign is hypertension. In auscultation of these patients a systolic interascapular murmur can be heard. Usually this pathology is diagnosed in early childhood.

Case report. We present a case of a 24-year-old man suffering from headache, vertigo and very high blood pressure until 220/110 mmHg during the last month. The patient referred that he did not suffer from any known pathology before. The laboratory findings were normal. In echocardiography examination, suprasternal view we saw stenosis of aorta with gradient 84.6 mmHg; V max 4.6 m/s. The aortic stenosis (aortic coarctation) was then confirmed in computed tomography angiography: 3 cm distal left subclavian artery the aorta was stenotic till 6 mm. The patient underwent percutaneous stent implantation for aortic coarctation. Three months later the patient was found normotensive.

Conclusion. Aortic coarctation should be suspected even in a young adult patients with hypertension. Every patient with hypertension, systolic interscapular murmur, cardiac insufficiency signs (at late stage) must underwent echocardiography examination. Early diagnosis is responsible for long term survival of these patients.

PP-22 Elderly patients with acute kidney injury- the effect of treatment on short- term outcomes

Petronijevic Z, Selim Gj, Gerasimovska-Kitanovska B, Trajceska L and Kuzmanovska-Palevska S
University Clinic for Nephrology, Medical faculty, Ss Cyril and Methodius University of Skopje, Republic of North Macedonia

Introduction. Acute kidney injury (AKI) is characterized by an abrupt decline in renal function occurred within hours or days. The incidence of AKI in elderly population (≥ 65) is up to 10 times higher compared to patients under 65 years of age, with an increased requirement for dialysis treatment. Older patients with AKI have an elevated risk of both short-term and long-term mortality.

Methods. 70 elderly AKI patients who were admitted in University Clinic of Nephrology, Skopje, were enrolled in the study, prospectively, during the 8 months period. All included patients had a hospitalization over the 24 hours and filled one of the criteria of AKI definition. According to outcome and treatment, patients were divided into two groups.

Results. The median age of this population was 74.28 ± 6.64 years, (53% female), with mean CCI (Charlson Comorbidity Index) score of 6.94 ± 1.94 . The most common comorbid conditions were chronic heart failure, with 47% of patients and diabetes mellitus, with 42.8%. Pre-existing chronic kidney disease was present in 44.3%. The majority of patients (70%) were classified at stage 3 of AKIN, 20% of patients were classified at stage 2 and 10% at stage 1. The group of survivors had significantly higher diuresis ($p=0.001$) and also a longer hospital stay ($p=0.000$). In the groups of patients with death outcome, the chronic cardiomyopathy was more frequently present ($p=0.034$). In terms of treatment, 58.6% of the AKI patients underwent hemodialysis while 41.4% received conservative treatment. Mortality rate was 52.8%, out of which 28.6% was in-hospital mortality, while in 24.3% of patient death occurred in follow up period up to 90 days.

Conclusion. High comorbidity burden is common in elderly patients who are at higher risk for the development of AKI. In our study survival is not related to different treatment options, but decreased urine volume is associated with lower survival. Applied treatment in elderly patients with AKI should be assessed by measuring the long term outcome.

PP-23 Characteristics and prognostic factors for outcome in elderly patients with acute kidney injury

Petronijevic Z, Selim Gj, Gerasimovska-Kitanovska B, Trajceska L and Gjeorgievski N
University Clinic of Nephrology, Medical faculty, Ss Cyril and Methodius University of Skopje, Republic of North Macedonia

Introduction. An association between AKI and the elderly has long been recognized. The elderly are particularly vulnerable for renal insults and the incidence rate of acute kidney injury is highest in this population. Coexisting disease that occur during the aging process increase the risk of AKI in elderly population. This study aimed to investigate the clinical characteristics and prognostic factors for outcome in the elderly patients with AKI and help improve prognosis.

Methods. 101 elderly patients (≥ 65 years) who filled out one of the criteria of definition of AKI according to KDIGO, were included in the study. Patients were divided into 2 groups by age, group <75 and group >75 years old. The burden of the simultaneous presence of comorbid conditions was estimated through the Charles Comorbid Index (CHI). In terms of outcome they were divided in group with short and 90-day survival.

Results. The mortality rate for the 90-day follow-up period after the AKI event was 45.5%. The intra-hospital mortality rate was 22.8%. In our study the age was not a risk factor for intra-hospital and 3-month outcome of patients with AKI. The presence of comorbid conditions, was not significant between survivors and deceased patients with AKI ($p=0.39$, $p=0.28$ consecutive). Cox regression analysis confirmed the CCI score as a significant factor of survival in patients with ABO, ($p=0.036$). The risk of mortality increased by 16.3% with each increase in this unit score. Cox regression analysis confirmed heart diseases as a significant prognostic factor for survival, increasing the risk of fatal outcome by about 2 times. We found a significant difference in survival time, depending on the presence of heart disease as a comorbidity ($p=0.037$). Conducted Cox regression analysis showed that HR-for heart disease, as a comorbidity, is 1.83 (1.020-3.306) and $p=0.043$. Cumulative survival was higher in the group of patients without cardiomyopathy-64.2% (0.07) compared to the group of patients with cardiomyopathy-43.8% (0.07).

Conclusion. AKI survivors with high burden of comorbidities are at high risk for post discharge death. Cardiomyopathy, as a risk factor, for two times increases the risk of death. CCI score is significant independent high-risk prognostic factors for poor outcome in elderly patients with AKI. Remain the recommendation for individual clinical approach, assessment and selection for the application of treatment taking into account the overall condition in adult patients with acute renal injury.

PP-24 Secondary Antiphospholipid syndrome at a young male

Hoxha E, Collaku L, Gjata M, Kuka S, Gjermeni I and Musabelliu J

Department of Internal Medicine, University Hospital Center "Mother Theresa" Tirana, Albania

Introduction. Antiphospholipid syndrome (APS) is an autoimmune disease characterized by the occurrence of venous and/or arterial thrombosis, and the detection of circulating antiphospholipid antibodies. APS occurs as a primary condition, or secondary (it can occur in the presence of systemic lupus erythematosus (SLE) or another systemic autoimmune disease). The diagnosis APS is based on a combination of clinical features and the presence of one or more of the following antiphospholipid antibodies (LAC, aCL antibody or a β 2GPI antibody present on two or more occasions, at least 12 weeks a part). A clinically significant aPL profile has been detected in approximately 30% of patients with SLE.

Case report. We are describing a rare case of a 23 years old male who was presented with dyspnea, retrosternal discomfort, fatigue, general weakness, joints pain over a period of 3 months. One single episode of syncope was his first clinical symptom 3 months ago which continued with the clinical manifestation as mentioned above. He was at first diagnosed as Thrombocytopenia in 2007 and Systemic Lupus Erythematosus (SLE) in 2020. When the patient was hospitalized at our clinic, he referred headache, dizziness and elevated blood pressure (170/100 mmHg). Moreover, laboratory and imaging examinations showed bilateral pulmonary thromboembolism and positive Anticardiolipin antibodies, positive ANA, positive SSA & SSB.

Conclusion. It can be very difficult to diagnose an APS at the beginning in the absence of classical symptoms. Though APS is one of the most common thrombocytophilias, unfortunately, it is not recognized often enough. Clinicians should investigate for the presence of antiphospholipid antibodies, as early diagnosis may influence the course of the disease.

PP-25 A rare case of a young female with seronegative-catastrophic Antiphospholipid syndrome

Hoxha E, Rista E, Djamanti J and Musabelliu J

Department of Internal Medicine, University Hospital Center "Mother Theresa" Tirana, Albania

Introduction. Catastrophic antiphospholipid syndrome (CAPS) is a rare but potentially life-threatening condition characterized by diffuse vascular thrombosis, leading to multiple organ failure developing over a short period of time in the presence of positive antiphospholipid antibodies (aPL). CAPS is a severe form of antiphospholipid syndrome, developing in about 1% of cases of classic antiphospholipid syndrome, manifesting as microangiopathy, affecting small vessels of multiple organs.

Case report. We are describing a rare case of a 33-year old woman who was presented to the internal medicine clinic with 10-day history of intense abdominal and right flank pain, nausea, vomiting, joint pain, shortness of breath, severe headache and one episode with loss of consciousness. She was at first diagnosed as Partial Seizure of Vascular Origin (2010); Seronegative Arthritis (2012) in treatment with Valproic Acid and Aspirin 100 mg/day; Prednison 5 mg/day (interrupted in the past 3 months). Her medical history was notable of three miscarriages. Laboratory and imaging examinations showed bilateral pulmonary effusion, left apical pulmonary consolidation, minimal pericardial effusion, total thrombosis right kidney, partial thrombosis left kidney, multiple spleen thrombosis, multiple gliotic lesions in periventricular white matter and negative aPL, positive ANA, anti-ds DNA, anti-RO, anti-RNP, anti-La, with renal and hepatic impairment. Based on the patient's medical history (syncope, 3 pregnancy losses) and on CAPS's Criteria: Renal Infarction, Spleen Infarction, Multiple Gliotic Lesions, was diagnosed with Seronegative CAPS.

Conclusion. CAPS is a systemic autoimmune disease, the most severe form of APS. The diagnosis can be challenging, especially in patients with negative antiphospholipid antibody. Early diagnosis and prompt treatment play a crucial role to save the patient's life.

PP-26 Can the serum creatine kinase (CK) level be a malnutrition parameter in patients with end-stage kidney failure?

Tanrisev M¹, Peker A² and Akar H²

¹Health Sciences University Izmir Tepecik Training and Research Hospital, Department of Nephrology, ²Health Sciences University Izmir Tepecik Training and Research Hospital, Department of Internal Medicine, Izmir, Turkey

Introduction. The aim of this study was to investigate the relationship between serum CK levels and malnutrition parameters in patients undergoing hemodialysis (HD) and peritoneal dialysis (PD) for end stage renal disease (ESRD).

Methods. In this prospective study, 60 patients receiving HD and 30 patients receiving PD for ESRD were evaluated. The laboratory findings specific to malnutrition measured in the last 3 months synchronously with CK were reached through the hospital information system, thanks to the routine followups of the HD and PD patients, in order to assess the laboratory data for the nutritional condition of the patients. The relationship between serum CK levels and Mini Nutritional Assessment (MNA) Test scores, albumin, C-Reactive Protein (CRP), arterial blood gas parameters, KT/V ratio, total body water, muscle mass, body mass index (BMI) and lean body mass (determined by Bioelectrical Impedance Analysis (BIA) were examined.

Results. No correlation was found between CK levels and age, dialysis duration and Ca serum values in HD and PD patients ($p > 0.05$). A positive correlation was found between CK levels and MNA scores and triceps skinfold thickness, lean body mass, body muscle mass and BMI values of PD and HD patients, and a significant negative correlation between total body water values ($p < 0.001$).

Conclusion. In the present study, it was revealed that serum CK level was correlated with the parameters in BIA method that has been increasingly used recently, which is compatible with the literature. MNA test is a method widely used in determination of malnutrition and it is recommended in determination and follow-up of malnutrition by international guidelines. A statistically significant correlation was determined between serum CK levels and MNA scores both in HD and PD patients ($p < 0.001$).

PP-27 Vascular access as a key point for a good adequacy of dialysis

Bulla A

Regional Hospital of Vlore, Albania

Introduction. Vascular accesses consist of permanent arteriovenous (AV) accesses (autogenous fistulas and synthetic grafts), tunneled venous catheters and temporary central venous catheters (CVCs). AV accesses have fewer complications than venous accesses, and are therefore the preferred hemodialysis access. An important additional issue is whether the type of access influences adequacy of dialysis (i.e. Kt/V). Key limiting factors in delivering adequate Kt/V are blood pump speed (QB), access recirculation, and treatment time. The aim of our study was to compare dialysis adequacy between patients with AVF and those with CVC on three different aspects: comparison of dialysis efficiency, comparison of nutritional status and the extent of anemia between these two groups of patients.

Methods. All patients were dialyzed with identical machines. Our study included 48 patients who were regularly treated with bicarbonate hemodialysis. All patients were dialyzed through AVF or CVC.

Results. 27 patients had AVF for vascular access, 21 males and 6 females, with the median age of 66 years. On the other side, 21 patients were dialyzed through CVC, 13 males and 8 females, the median age was 59 years. 96% of patients with FAV achieved Kt/V dialysis adequacy > 1.2 and 66.6% of them had Hb > 10 gr/dl, while in group patients with CVC, 57% of them achieved adequacy of dialysis Kt/V > 1.2 and 57% of them had Hgb > 10 gr/dl.

Conclusion. AV accesses are superior to venous accesses because they are less prone to complications and are more likely to deliver prescribed Kt/V within prescribed treatment time.

PP-28 Perception of kidney disease amongst general population

Spahia N¹, Rroji M¹, Qurku O², Cafi E³, Buzi M⁴, Idrizi A¹ and Barbullushi M¹

¹Nephrology Service QSUT, Tirana, ²Gjirokaster Hospital, Albania; ³Kukes Hospital, ⁴American Hospital Durres, Albania

Introduction. While prevalence of CKD is globally increasing, nationwide incidence has reached approximately 130 per million. Resembling regional and European trends, diabetes and hypertension are increasingly pointed out as the most prevalent causes. Awareness about kidney disease potentially has an important impact on prevention, diagnosing, and treatment. Aim of the study was evaluation of the perception and knowledge of our population about kidney disease.

Methods. Study included subjects from urban and rural areas, without known renal disease, diabetes or hypertension. A simple questionnaire consisting of 5 general and 8 specific questions was applied.

Results. The study included 922 subjects with mean age 44 ± 18 years old, of which 57.1% female, 86.6% living in urban areas, 54.4% with university education, 9.6% unemployed. 20.6% had a recognized person diagnosed with a kidney disease, 12.9% never had a spot urine test. The link between diabetes and kidney disease was acknowledged by 52.8%, while 29.2% denied that link and 18% had no information. Interestingly 75.7% of subjects acknowledged a link between hypertension and kidney disease, but the reciprocal causative association was confirmed only by 47.2% of subjects in this group. Most cited renal diseases were kidney stones (40.2%) and urinary infections (36.2%). 13.6% of subjects responded completely right. The knowledge was significantly better in subjects who had a recognized person with kidney disease ($p = 0.01$) and in urban group ($p = 0.038$). We found no significant difference of knowledge according to education, gender, age or employment status.

Conclusion. Our population needs education about kidney disease, focusing on link with diabetes and hypertension and far beyond kidney stones or simple urinary infections.

PP-29 A good nutritional state in dialysis might overcome the effect of inflammation on atherosclerosis

Spahia N, Duraku A, Rroji M, Idrizi A and Barbullushi M
Nephrology Service, UHC "Mother Teresa", Tirana, Albania

Introduction. Dialysis patients are highly prone to atherosclerosis. We evaluated patients on PD and MHD treatment, for the presence of atherosclerosis and its link with inflammation and nutritional status.

Methods. In a cross-sectional study, 102 patients on dialysis treatment for ≥ 3 months, of which 47 patients on PD, were evaluated for the presence of atherosclerosis using carotid arteries B-mode ultrasonography. The athe-

rosclerosis was confirmed in case of CIMT >10mm and/or presence of plaque. Inflammation was evaluated using CRP (mean value of the last 6 months). Nutritional status was evaluated with 7 points SGA score.

Results. Atherosclerosis was found in 64.7 % of patients and inflammation was present in 39.2%. Although inflammation was significantly more pronounced in PD (57.4%) than HD patients (23.6%) ($p=0.002$), there was no difference in atherosclerosis presence in PD versus MHD patients (respectively 63.8% vs 65.5%, $p=0.28$). We found a better nutritional status in PD group and non-atherosclerotic group, with evidence of a significantly higher SGA score in those two groups, compared respectively to MHD ($p<0.05$) and atherosclerosis group ($p=0.035$). After multivariate regression analysis SGA score was found independently and significantly associated with atherosclerosis (OR 1.86) as was CRP, age, diabetes, PTH and phosphate.

Conclusion. A low SGA score is associated with atherosclerosis in dialysis patients. Keeping a well-nourished status might out-weight the effect of inflammation on atherosclerosis.

PP-30 Glioblastoma in kidney transplant recipients: case report

Dedej A¹, Nasto F¹, Strakosha A² and Thereska N¹

¹Department of nephrology, American Hospital, ²Service of Nephrology, University Hospital Center "Mother Teresa" Tirana, Albania

Introduction. Intracranial glioblastoma after a kidney transplant is a rare complication. The use of immunosuppressive therapy to preserve the allograft function can significantly increase the incidence of malignancies in transplanted recipients compared to general population. Cases of glioma are less frequent described. The ability to identify and prevent solid organ tumors in the transplanted patient, depends on regular screening examinations and strict adherence to prophylactic measures. Screening the patient and donor prior to transplant can help to detect any underlying pre-existing malignancy.

Case report. A 56 years old female, with history of end stage renal disease due to chronic pyelonephritis, treated 4 years with hemodialysis, underwent kidney transplantation in 2018. The kidney donor was her husband 61 years old. She was maintained on three immunosuppressant drugs: prednisolone, *mycophenolate mofetil* (MMF) and tacrolimus. Laboratory results: WBC 6.7×10^9 , RBC 4.5×10^{12} , Hb 12.8 g/dl, BUN 26 mg/dl, creatinine 0.9 g/dl, blood level of tacrolimus 5.3 ng/ml, TSH 0.6 UI/ml, HIV negative. Three years after transplantation the patient was presented to the clinic with headache, trembling face, loss of consciousness for 10-15 seconds, without muscle contractions. Based on MRI the diagnosis of intracranial glioblastoma was confirmed. Patient was treated with radiotherapy for 5 weeks and continues the treatment with Levetiracetam.

Conclusion. Kidney transplant recipients are at higher risk of developing carcinoma. Epithelial cell neoplasia has been described in 50% of cases. The most common neoplasm involving the CNS of transplant recipients is non-Hodgkin lymphoma while glial tumors are rarely described. Several hypotheses have been proposed to explain a possible link. One possible factor may be the immunosuppressive state of recipients as a result of post-transplant administration of immunosuppressive drugs, as it is known that gliomas have an higher incidence in HIV-infected patients. However, it is not yet clear whether immunosuppressive drugs acts as a direct transforming factor.

PP-31 Silent brain infarctions in hemodialysis patients

Nasto F and Dedej A

Department of nephrology, American Hospital, Tirana, Albania

Introduction. End Stage Renal Disease (ESRD) is associated with an increases risk of cerebrovascular accidents with significant morbidity and mortality. Stroke is the third most common cause of cardiovascular disease death in hemodialysis patients. Chronic renal disease is an independent risk factor for stroke in the general population. The aim was to highlight the risk factors for stroke in our dialysis population, to see the prevalence of stroke in this population and to find evidence of "silent infarcts".

Methods. We conducted a retrospective, qualitative and descriptive study which involved 1732 patients from 5 different centers in the Amerikan Hospital from November 2008 to December 2019. We identified 70 different case of cerebrovascular accidents. Also we had a control group of 70 dialysis patients to compare, (those we did not select it preferentially but we selected according to the ordinal registrations in to the centers).

Results. A total number of 1732 patients were observed during November 2008 till December 2019. Of these 70 patients were diagnosed with cerebrovascular accidents. The mean age was 57.6 years. 33patients were females (47%) and 37 patients were males (53%). 23 patients were younger than 55 years old and 47 patients (68%) were older than 55 years. The mean age of the control group is 53.69 years. The vascular access in 22 patients was AVF (fistula 30.4 %) and 48 had a central venous catheter (69.6%). In the control group there were 52 AVF (74.3%), 1 GAV, and 17 CVC (24.3%). The average hemoglobin levels in the stroke group was 9.3 g/dl compared to 11.4 g/dl of the control group.

Conclusion. The prevalence of stroke among hemodialysis patients in our center resulted 4.01%. The patients with stroke tended to be older, with lower hemoglobin values and the central venous catheter represented the vascular access in the majority of the patients (69.6%). Vascular access may increase stroke risk by affecting cerebral hemodynamics.

PP-32 Factors associated with increased risk of hospitalization among patients with diabetic kidney disease

Pasko N, Strakosha A, Cadri V, Kaloshi V, and Barbullushi M

Service of Nephrology, University Hospital Center "Mother Tereza", Tirana, Albania

Introduction. The prevalence of diabetes in Albania has increased rapidly in recent years and is likely to continue to increase in the future, with important implications for health policy. Our local data revealed that 18% of patients undergoing dialysis in Albania have diabetic nephropathy as a cause of renal failure. The aim of the study was to assess the excess of morbidity and factors associated with hospitalization for patients with diabetic kidney disease.

Methods. This is a single center study of patients with diabetic kidney disease attending nephrology service during 15 months. We evaluated the cause of hospitalization and analyzed the risk factors. Multivariable regression was used to identify factors associated with hospitalization rates.

Results. 102 patients were included in the study, (57% males and 43% females), with a mean age 60.4 ± 15.8 years. The mean duration of diabetes was 9.3 ± 5.9 years. 14.3% of patients had a blood pressure $<130/80$ mmHg. Only 19.5% of patients on stage 3 and 4 of CKD were not taking either an ARB or ACE inhibitor. HbA1c levels and fasting plasma glucose levels were significantly higher in diabetics with macroproteinuria ($p < 0.001$). We found that all-cause hospitalizations were associated with older age, (≥ 62 versus 45 to 61 years), more proteinuria (≥ 500 versus <300 mg/g), higher systolic blood pressure (≥ 140 versus 120 to <130 mmHg), higher HbA1c levels, and lower eGFR. The most common causes of hospitalization were related to metabolic (41.8%), cardiovascular (29.8%), infections (11.7%), respiratory (6.7%) causes and macroproteinuria (10.8%). We found that the rates of cardiovascular hospitalizations were higher among those with ≥ 500 mg/g of proteinuria irrespective of eGFR.

Conclusion. We observed a high rate of hospitalization for patients with DKD even for those with moderate reduction in kidney function. We found that high levels of proteinuria and reduced cardiac function have the largest association with hospitalizations across a wide range of kidney function levels. Together these findings support the need to increase the opportunities for early interventions and effective follow up of patients.

PP-33 A rare nephrotic syndrome case with hypotension and rapid mortality: primer amyloidosis

Cengiz AN¹, Tanrisev M² and Gul G³

¹SBU Izmir Training and Research Hospital, Internal Medicine, ²SBU Izmir Training and Research Hospital, Nephrology, ³SBU Izmir Training and Research Hospital, Pathology, Izmir, Turkey

Introduction. Although renal involvement is often in the form of asymptomatic proteinuria in patients with AL amyloidosis, clinically it can be seen a wide ranges from overt nephrotic syndrome. If the primary and secondary nephrotic syndrome etiologies are viewed, its hypotensive course distinguishes AL amyloidosis from other causes.

Case report. 61-year-old female patient was referred from the pulmonology clinic to the nephrology clinic because of oliguria. The chief complaints were fatigue, decreased urine output and shortness of breath. After the patient was diagnosed with congestive heart failure 2 months ago, bilateral massive pleural effusion developed and a right tube thoracostomy was placed. Apart from this, the patient had been operated on 2 years ago for carpal tunnel syndrome. Arterial blood pressure was 80/50 mm/Hg, heart rate was 50 beats/min. Biochemical parameters: sodium 129 mmol/l, potassium 5.68 mmol/l, phosphorus 9.2 mg/dl, corrected calcium 9.9 mg/dl, albumin 2.7 g/dl. The patient's admission creatinine was 4.7 mg/dl, compared to the basal creatinine value of 0.88 mg/dl. Spot urine protein level: 694 mg/dl, spot urinary creatinine level: 142 mg/dl. The serum lambda light chain level was found to be 1720 mg/l, and the kappa light chain level was 32 mg/l. The ratio was 0.0189 (Kappa/lambda ratio: 0.26-1.65) and was evaluated for clonality impairment. Echocardiography revealed left ventricular EF 45%, left ventricular global mild hypokinetic, hypertrophic cardiomyopathy. Left atrium dilatation, severe tricuspid insufficiency, pulmonary hypertension were reported as increased left ventricular myocardial brightness. Further investigation and examination were recommended due to findings suggestive of amyloidosis. In the bone marrow aspiration sampling, 15-20% of typical plasma cells and sporadic mott cells were seen.

Conclusion. Amyloidosis should be considered in the differential diagnosis, especially in individuals with nephrotic syndrome over the age of 40 with systemic disease findings.

PP-34 Should we prescribe individualisation dialysate sodium or not?

Eftimovska-Otovikj N¹ and Stojceva-Taneva O²

¹General City Hospital 8th September, ²Dialysis center Diaverum, Skopje, Republic of North Macedonia

Introduction. Pre-hemodialysis serum sodium levels can vary among patients, therefore, a single dialysate sodium prescription may not be appropriate for all patients. The aim of the study was to investigate whether dialysis patients will have some beneficial effects of prescription of different models of dialysate sodium. **Methods.** 77 nondiabetic subjects performed 12 months hemodialysis (HD) sessions with dialysate sodium concentration set up at 138 mmol/L, followed by additional 3 models of dialysate sodium (each one 2 months sessions) wherein dialysate sodium was set up: model

1: according to pre-hemodialysis serum sodium concentration, model 2: sodium concentration in UF fluid, model 3: sodium profiling (144-136 mmol/L). Blood pressure (BP), interdialytic weight gain (IDWG), thirst score, sodium gradient were analysed. After the standard dialysate sodium hemodialyses, the subjects were divided into normotensive, hypertensive and hypotensive based on the average pre-hemodialysis systolic BP during the standard dialysate sodium hemodialyses.

Results. Model 1: resulted in significantly lower BP (153.60 ± 14.26 versus 133.61 ± 11.88 mmHg; $p=0.000$) and IDWG (2.21 ± 0.93 versus 1.87 ± 0.92 kg; $p=0.018$) in hypertensive patients, whereas normotensive patients showed only significant decrease in IDWG ($p=0.004$). Hypertensive patients had significant highest sodium gradient compared to other patients ($p<0.05$), followed by significant increase of 0.6% IDWG confirmed with univariate regression analysis. Thirst score was significantly lower in all patients with individualized-sodium HD. Model 2: resulted in significantly lower BP in normotensive and hypertensive patients, with no influence on IDWG and thirst score compared to standard dialysate sodium. Model 3: significantly higher BP and IDWG in all 3 groups and significantly higher thirst score in normo and hypotensive patients, with no influence in hypertensive patients.

Conclusion. Model 1 resulted in better clinical outcome in hypertensive and normotensive patients compared to standard dialysate sodium, whereas other 2 models didn't show any clinical benefits.

PP-35 Mortality and related risk factors of COVID-19 infection in hemodialysis patients-single center study **Cule E**

Nephrology and dialysis department, Hygeia Hospital Tirana, Albania

Introduction. Dialysis patients appear to be at increased risk for viral infection next to an enhanced risk for mortality, even in the face of an often apparently mild clinical presentation. Immune systems may be responsible for a reduced antiviral response, whereas chronic activation of innate immune system and endothelial dysfunction provide background for a more severe course. The aim of this study was to provide evidence on Covid-19 incidence, mortality and determinant risk factors for the mortality of 54 infected patients of Hygeia Hemodialysis center based on clinical, laboratory, and radiologic findings.

Methods. This is a single-center, retrospective, observational study during the period July 2020-October 2021. This study included 53 dialysis patients confirmed to be infected by coronavirus, with positive in RT-PCR/rapid test nasopharyngeal swab. Data are collected by files and included clinical, laboratories and radiological information.

Results. The incidence of Covid-19 infection in the center (160 patients) was very high 0.37 compared to

the incidence in the general population. Of 54 patients, 10 patient died (18%), 16 (23%) patients were admitted at the hospital, 10 of them needed mechanical ventilation. Patients who died were older (mean age was 60+), had more comorbidities as diabetes (50%), COPD, CV disease (30%). Most of patients (78%) had radiological manifestation compatible with Covid pulmonary involvement, and 39% had severe radiological manifestation CO-RADS 5.

Conclusion. Hemodialysis patients are older and have more underlying diseases, they likely are more susceptible to severe acute respiratory syndrome Covid-19 pneumonia than general population, and have a high mortality rate. The presence of clinical severity of clinical presentation, high levels of ferritinemia in admission, decrease in platelet count in hospitalization may be used to predict the mortality risk of these patients.

PP-36 COVID 19 in primary care

Gjyzari I¹ and **Velaj A²**

¹Primary Health Care Centre, Tirana, ²University Hospital Centre "Nene Tereza", Tirana, Albania

Introduction. Most people with coronavirus disease 2019 (COVID-19) develop mild or uncomplicated illness. Primary care has played an important role in the diagnosing and managing of COVID-19 reducing the demand for hospital services. The aim of this study was to evaluate the incidence and outcome of COVID-19 patients followed in the primary care setting.

Methods. This was an observational study during July-September 2021, in a primary health care center in Tirana Albania. Included were patients aged >18 years who tested positive for COVID-19 by polymerase chain reaction (PCR) or rapid test.

Results. During three month period 66 patients who asked the general practitioner consultation tested positive for the PCR or rapid test. Mean age was 42 ± 10.5 years and 36% were male. 12% had comorbidities as diabetes mellitus 8%, Arterial Hypertension 62%, other 30%. The spectrum of symptoms was: fever 90%, cough 60%, tiredness 93%, loss of taste or smell 6%, muscle pains 89%, diarrhea 15%, red or irritated eyes 1.5%, difficulty breathing 3%. The situation aggravated in 2 cases and they needed hospitalization.

Conclusions. All over the world primary care physicians have been on the front line of the pandemic response. Primary care can provide important data to public health. The sustainable primary care with adequate resourcing can strengthen the capacity for essential services.

PP-37 Repeated syncopal event in a young female diagnosed with bilateral pulmonary tromboembolia: case report

Kuka S, Rama B, Agolli L and Gjerazi J

Department of Internal Medicine, University Hospital Center "Mother Theresa" Tirana, Albania

Introduction. Pulmonary embolism is a blockage of an artery in the lungs by thrombus. Virchow's triade of local trauma to the vessel wall, hypercoagulability and stasis of blood leads to thrombus formation in the leg veins. The most common sources of pulmonary emboli are the pelvic veins or deep veins of the thigh. The risk of blood clots is increased by cancer, prolonged bed rest, smoking, stroke, certain genetic conditions, estrogen-based medication, pregnancy, obesity, and after some types of surgery. Pulmonary emboli affect about 430,000 people each year in Europe. Rates are similar in males and females. Symptoms of a PE may include shortness of breath, chest pain particularly upon breathing in, and coughing up blood. On the other hand, syncope as a sign of pulmonary thromboembolism is an unusual clinical sign. In emergency department syncope accounts for 1% off all visits, and is a clinical sign of many diseases.

Case report. 19 years old female presented in emergency with a history of two episode of syncope, without a dyspnea and later diagnosed and treated as a case of pulmonary thromboembolism. At first, the diagnosis was suspected from the Cardiac ECHO (dilated pulmonary artery 35mm, and PSAP 60mmHg), then confirmed with pulmonary angio-CT. Anamnesis vitae: the patient had been treated 4 years ago for a thrombophlebitis.

Conclusion. When a patient suffered a syncopal episode, pulmonary embolism must be considered as a possible diagnosis.

PP-38 Acute kidney injury in leptospirosis. Be alert of this condition

Duraku A¹, Greca E², Selmani B¹, Bulla A² and Barbullushi M¹

¹Service of Nephrology, University Hospital Center "Mother Tereza", Tirana, ²The Hospital of Vlora, Albania

Introduction. Leptospirosis is a zoonotic infection, spread all over the world caused by leptospira, a spirochete that mostly affects liver and kidney. A common complication that needs to be alert is Acute Kidney Injury (AKI), a life-threatening condition. It is characterized by tubular interstitial nephritis and tubular dysfunction. The most frequent form of leptospire nephropathy is hypokalemic and no oliguric form. We have studied the incidence of AKI in Albania along with the renal injury in two leptospiral phases.

Methods. 50 patients, diagnosed with Leptospirosis complicated with AKI were admitted at "Infection Diseases Department And Nephrology Department Of Mother Teresa Hospital" In Tirana between 2017-2020. All patients data were evaluated by their charts. Statistical analysis was performed using SPSS 20, Linear Regression. Elisa test was used for confirmation of leptospirosis infection and KDIGO classification for AKI diagnosis.

Results. Incidence Of AKI in Leptospirosis was 40%. 86% of patient were male. The most frequent age was 51-56 (51.4±12.69). Leptospirosis AKI was mostly hypokalemic and no oliguric. Mortality was 12% and only

16% of all patient needed hemodialysis treatment. Serum BUN, creatinine, bilirubin, potassium and thrombocytopenia levels were higher in acute phase than in immune phase. In the acute and immune phase WBC and PLT were independent risk factor of AKI $p > 0.005$. Mean value of WBC in acute phase was 10416/mm³ and in immune phase 9056/mm³ ($p < 0.003$). Mean value of PLT was 82000/mm³ in acute phase and 190000/mm³ in immune phase ($p < 0.0002$). In acute phase was a positive relation of bilirubinemia and azotemia $r = 0.369$ and with creatinemia $r = 0.339$ In immune phases there was a positive relation of bilirubin with azotemia ($r = 0.882$) and creatinemia ($r = 0.540$).

Conclusion. We concluded that AKI in leptospirosis is an actual problem for nephrologists in Albania and it is really important early and adequate treatment to have a good prognosis.

PP-39 Acute kidney injury induced by rhabdomyolysis caused by carnitine palmitoyltransferase ii deficiency - first reported case in two albanian brothers

Greca E¹, Seferi S², Babameto A³, Duraku A², Selmani B² and Barbullushi M²

¹The Hospital of Vlora, ²Service of Nephrology, University Hospital Center "Mother Tereza", Tirana, Laboratory of Medical Genetic, "Mother Tereza" Hospital, Tirana, Albania

Introduction. Carnitine palmitoyltransferase II deficiency is an autosomal recessively inherited genetic metabolic disorder. It is characterized by an enzymatic defect that prevents long-chain fatty acid from being transported into the mitochondria for utilization as an energy source.

Case report. A 33 years old male patient was admitted to our hospital with muscle weakness, nausea and anuria. The patient mentioned he had performed excessive physical activity 3 days prior to hospitalization and feeling low back pain and muscle pain as well as lightly brown-colored urine. He then experienced anuria for about two days before arriving at the emergency unit. Six years ago, his older brother went through the same medical condition after a strenuous exercise. Physical examination and laboratory testing were performed at the admission. Blood screening revealed high serum levels of CK 64 180 U/L, CK-MB 1057 U/L, LDH 2890 U/L, AST 4017 U/L, ALT 1000 U/L, creatinine 6.6 mg/dl, urea 169 mg/dl. Kidney ultrasound showed normal kidneys in terms of size and structure. Other lab tests were within the normal range. The persistence of anuria and progressive declining of renal function were strong indicators to initiate dialysis treatment. The patient underwent eight hemodialysis sessions until the renal function was recovered. Genetic testing (molecular analyses) for our patient and his brother confirmed Carnitine palmitoyltransferase II deficiency. The patient was discharged from the hospital in good condition, with pro-

per recommendations regarding his lifestyle to prevent similar episodes in the future.

Conclusion. Patients showing myalgia, dark urine (brown/redish/tea-coloured), high level of CK and development of AKI that require hemodialysis should be examined for inherited rhabdomyolysis induced by CPT II deficiency. Recognition of this condition can prevent further episodes of acute kidney injury.

PP-40 Metastatic renal cell carcinoma to the thyroid gland

Dyrmishi B, Rista E and Olldashi T

Hygeia Hospital Tirana, Albania

Introduction. The thyroid nodules are frequent in general population. The nodules are more prevalent in women and older age groups and detection are increased in people who underwent thyroid ultrasound. Metastasis to thyroid are rarely observed in the clinical practice.

Case report. A woman 42 years old present to the consultation for a solitary nodule to the right lobe of thyroid gland with dimensions 2.5 x 3 cm. The FNA-Biopsy of the nodule: Bethesda IV.

She referred than 8 years before left nephrectomy was done due to renal cell carcinoma. After the result of FNA- Biopsy confirmed the diagnosis total thyroidectomy was performed. The pathology findings was consistent with a solitary metastasis most compatible with a clear cell carcinoma from her previous renal carcinoma and the chronic lymphocytic thyroiditis. The immunohistochemistry findings ruled out primary thyroid cancer: CD-10 positive, EMA positive, Thyroglobulin negative, HBME-1 negative. The patient after surgery was treated with levothyroxine. One and a half months after thyroid surgery the PET-Scan was performed where focal 18-FDG uptake was seen in the thyroid bed, but did not find other metastasis. The ultrasound of the neck, did not detected thyroid tissues and without pathological lymph node. The lab results: TSH=5.9 mUI/ml; Ac TPO antibodies=90 UI/ml (normal range <70), Thyroglobulin <0.2 ng/ml (normal range 0-5); Thyroglobulin antibodies =32. UI/ml (normal range <70).

Conclusion. Solitary metastasis in the thyroid gland are rare, but they should be considered in a patient who have a history of renal carcinoma. Metastases in the thyroid gland can occur many years after removal of renal carcinoma.

PP-41 Anuria due to nephrolithiasis in autosomal dominant polycystic kidney disease (ADPKD) patient.

A case report

Toska L, Cadri V, Strakosha A, Idrizi A, Saraci A and Barbullushi M

Service of Nephrology, University Hospital Center "Mother Teresa" Tirana, Albania

Introduction. Nephrolithiasis is frequent among ADPKD patients. Prevalence ranges between 13.3% to 58% in patients with ADPKD but its diagnosis can be challenging.

Case report. A 58 year old female, CDK stage III-A secondary to ADPKD present in emergency unit with: back lower pain, fever, severe dyspnea, strong chest pain, anuria. Results of examinations: RBC: 4.570.00 mm³, HGB: 11.7g/dl, HCT: 35.7%, WBC: 21.500 mm³, PLT: 44.000 mm³, urea: 136 mg/dl, creatinine: 5.21 mg/dl, D-Dimer: 12.8 mg/dl (0.2-0.5), total protein: 5.3 g/dl, albumine: 2,9 mg/dl, uric acid: 10 mg/dl, calcium: 8,7 mg/dl, potassium: 3.9 mg/dl, procalcitonine: 0.41 ng/ml, ferritine: 302 ng/ml, CRP: 16,08 mg/dl, LDH: 377U/L, fibrinogen: 600 mg/dl, PT: 110, INR: 0.94, Urine: pH 6.0, protein: 25 mg/dl, erythrocyte: 99, leukocyte: 85, bacteria 30. Abdominal ultrasound showed large volume of the kidneys with multiple cysts and hepatic cysts but missed kidney stones. Due to clinical signs and high D-Dimer levels she underwent Pulmonary Angio CT Scan which excluded Pulmonary Thromboembolism. Computerized tomography (CT) without contrast showed a 6mm stone in kidney pelvis complicated with hydronephrosis. After performing a hemodialysis session the patient had diuresis and the polyuria phase lasted 10 days. She was discharged after 4 weeks of hospitalization in very good health and optimal renal function: urea 51.7 mg/dl and creatinine 1.54 mg/dl. She had normal renal function urea 40mg/dl and creatinine 1.2mg/dl at her last updated follow up 3 months after discharged.

Conclusion. Nephrolithiasis should be kept in mind in ADPKD patients with liver cysts, upper urinary tract obstruction and hematuria. Early diagnosis and accurate management of the renal stones in ADPKD are important to prevent progression to ESRD and acute decline in renal function.

PP-42 Acute kidney injury from COVID-19 in a patient with chronic kidney disease stage III-A, who underwent a successful kidney transplant. A case report

Cadri V, Rista E, Strakosha A, Pasko N, Toska L, Saraci A and Barbullushi M

Department of Nephrology, University Hospital Center "Mother Teresa" Tirana, Albania

Introduction. Acute kidney injury (AKI) is routinely diagnosed in hospitalized patients due to COVID-19 but in Chronic Kidney Disease (CKD), such a high risk population, complication with AKI is a strong predictor of end stage renal disease (ESRD) who needs renal replacement therapy to be resolved.

Case report. A 46 year old male had CKD stage III-A secondary to hypertension by 7 years. On July 2020 he tested positive to COVID-19 and was treated successfully at home. Three months later he presented with hematuria, fatigue and myalgia. Results of examinations: RBC: 3.040.000 mm³, HGB: 9.1g/dl, HCT: 24.8%, PLT: 330.000 mm³, WBC: 9300 mm³, PCR: 55.5 (1-8), fibrinogen: 611mg/dl (169-515), PT: 61.9% (70-120), INR: 1.36 (0.7-1.2), urea: 225mg/dl (10-43), creatinine:

8.5 mg/dl (0.5-1.2), uric acid: 8.6 mg/dl (2.6-7.2), phosphorus: 6.8mg/dl (2.5-4.5), cholesterol: 116mg/dl (140-220), TG: 31 mg/dl (50-150), Alb: 3.1 g/dl (3.5-5.2), eGFR 9 ml/min/1.73 m². Albuminuria/24h: 2.48g% CT lungs-abdomen: 3-4 focal density in both lungs due to COVID-19 and chronic damage in both kidneys. We conformed ESRD and dialysis was recommended. The patient refused it so we worked up for live related kidney transplant. He underwent a successfully kidney transplant after three months of initial diagnosis of COVID-19. Basiliximab induction with triple drug immunosuppression consisting of prednisone, tacrolimus and mycophenolate mofetil was used. He was discharged with a normal graft function. He remains so at last updated follow up 11 months post transplant with an eGFR of 93 ml/min/1.73 m².

Conclusion. We report this case for guiding clinical nephrologists to several concrete steps to prepare for our collective new normal in coming, for our high risk patients in the setting of a global pandemic.

PP-43 Comorbid factors for early mortality in myeloma-related kidney disease. Case series study

Cadri V, Saraci A, Pasko N, Imeraj M, Toska L, Strakosha A, Rista E, Cili A, Ivanaj A and Barbullushi M
Department of Nephrology, University Hospital Center (UHC) "Mother Teresa" Tirana, Albania

Introduction. Renal impairment (RI) is an independent predictor of poor survival outcomes in multiple myeloma (MM). In the first year, significant early mortality (EM) was determined in patients with MM who underwent Hemodialysis treatment. The aim of the study was to evaluate the EM rate and investigate the risk factors associated with EM in MM patients.

Methods. The study was held in the hematology unit of UHC "Mother Teresa" during January 2020-March 2021. Out of 183 patients, 33.3% have in presentation Myeloma-Related Kidney Disease (MRKD).

Results. We evaluated 61 patients with MRKD, 67.2% men, the mean age 66.2±8.7 years old, and 19.7% of patients needed hemodialysis support. The one-year mortality rate in MRKD was found 29.5% (p<0.01), and the EM rate (the first 100 days of diagnosis) 13.1% while 62.5% of them underwent hemodialysis treatment. During follow-up, 10% of patients with MRKD had confirmed positive SARS-CoV2 tests, associated with a high mortality rate of around 67%. Univariate logistic regression identified GFR<30ml/min (p<0.01), hemodialysis treatment (p<0.01) and creatinine >2 mg/dl (p=0.01) as risk factors for mortality. Multivariate logistic regression found creatinine >2 mg/dl, GFR <30 ml/min, hemodialysis, Covid-19 infection and hypoalbuminemia remained independent predictors of high mortality in MRKD patients after adjusted for cofounders.

Conclusion. A high mortality rate resulted in MRKD infected with Covid-19. RI is the second most common cause, after infection, of EM in MM patients. It is po-

tentially reversible, so it is of high interest early diagnosis and management of MRKD for more prolonged survival. Prophylactic measures in patients with preexisting kidney failure may further reduce this risk.

PP-44 A rare atypical hus following biontech vaccination for COVID

Tanrisev M¹, Gul M¹, Demet K², Emel EP³, Hilal S⁴ and Omer BB⁵

¹SBU Izmir Training and Research Hospital Nephrology, ²SBU Izmir Training and Research Hospital Internal Medicine, ³SBU Izmir Training and Research Hospital Pathology, ⁴SBU Izmir Training and Research Hospital Radiology, ⁵SBU Izmir Training and Research Hospital Gastroenterology, Izmir, Turkey

Introduction. Atypical hemolytic-uremic syndrome (aHUS) is a disease that primarily affects kidney function. It is characterized by the triad of thrombocytopenia, microangiopathic hemolytic anemia, and acute renal failure. A variety of precipitating events have been associated with aHUS including infections, drugs, autoimmune conditions, transplants, pregnancy, and metabolic conditions.

Case report. A previously healthy 19 year old woman admitted to the hospital with sudden onset of bloody diarrhea 2 days after Biontech vaccination, physical examination was revealed no any pathological sign except bloody diarrhea. Colonoscopy was performed promptly and it was resulted with severe colitis. In the arterial and venous phase of CT image hypodense micro-thrombus was observed and transverse colon biopsy was characterized with ischemic colitis. There was no parasite/Adenovirus/Rotavirus/Shiga toxin in the stool tests. Hemoglobin and platelets dropped from 13.2 to 5.3/186000 to 22000. Haptoglobin level was 0.08; the lactic acid dehydrogenase was elevated at 1119. Peripheral smear showed 2% schistocytes. ADAMTS 13 was positive at 88%, fibrinogen level was normal and Coombs was negative so TTP and DIC were excluded. 1 mg/kg/day steroid and IVIG therapy was started but the patient had not improved with this therapy and 2 times plasmapheresis were administered. Then, the patient showed evidence of hematological and renal remission, with improvement in platelet 260000, creatinine level 1.9 mg/dl and LDH level trending down to 614U/L after plasmapheresis. While still awaiting the genetic study results, we started the patient on eculizumab treatment because of the suspected aHUS. The patient was also administered the meningitis vaccine for meningitis prevention and was started on penicillin prophylaxis before initiation of the eculizumab therapy. After 28 days of eculizumab therapy, the serum creatinine reached to baseline level 0.9 mg/dL.

Conclusion. Atypical HUS has a poor prognosis eventually leading many patients to require dialysis and there are many etiological factors for this disease. While the coronavirus infections and vaccinations with Biontech

are so common, we want to call attention to the Biontech vaccination may be a precipitating factor for aHUS.

PP-45 Evaluating urinary albumin excretion after kidney donation

Collaku K¹, Strakosha A¹, Pasko N¹, Cadri V¹, Daka A², Saraci A¹ and Barbullushi M¹

¹Service of Nephrology, University Hospital "Mother Teresa", ²American Hospital, Tirana, Albania.

Introduction. Living donor kidney transplantation has become an important treatment option for ESRD patients. In our country, for more than two decades now, we have a growing number of individuals donating kidney to relatives. The aim of this study was to assess the role of nephrectomy as an independent risk factor for the development of microalbuminuria after donating a kidney for transplant.

Methods. Between 1993 to 2017, 269 patients with ESRD have received a kidney transplant from a living donor in Albania. Among them, 70 donors accepted to participate in the study. Urine and blood samples were collected for further examination. Urinary albumin excretion rate was calculated according to the albumin to creatinine ratio in an early-morning urine sample. The CKD-EPI formula was used to calculate GFR.

Results. There were a total of 70 kidney donors participating in the study, 73% female and 27% male. The average time after donation was 10±5.6 years ranging from 4 to 28 years. The mean age at the time of nephrectomy was 49.3±10.2 years. The prevalence of microalbuminuria was 24.3%, female had a higher risk (ratio F:M, 2.7:1). There was a negative correlation between microalbuminuria and eGFR, $r:-0.33(p<0.01)$, higher level of microalbuminuria was associated with decrease of eGFR. There was no association with age, BMI and blood pressure. Microalbuminuria was present only in 21.1% of 19 obese donors and in 28.1% kidney donors with hypertension.

Conclusion. We found that kidney donation is associated with a modest increase in albuminuria parallel to a gradual and moderate decrease in eGFR. The risk after donating the kidney is minimal for the donor but the long-term follow-up is necessary for all living kidney donors in order to minimize harmful effect.

PP-46 Correlation of systolic left and right ventricle with pulmonary hypertension and their impact on survival in dialysis patients

Rroji M¹, Cafka M², Seferi S¹, Seiti J² and Barbullushi M¹

¹Service of Nephrology, ²Service of Cardiology, University Hospital Center "Mother Tereza", Tirana, Albania

Introduction. Pulmonary hypertension (PH) is lately known as a complication of chronic kidney disease. The present study aimed to determine the impact of systolic left and right ventricle on PH and dialysis patients' survival.

Methods. We studied 125 stable hemodialysis and peritoneal patients (females 40%, mean age 52.42±11.88

years) on renal replacement therapy (RRT) for more than 3 months with a follow of 2 years. After conventional echocardiographic examination, a tissue Doppler echocardiographic (TDE) examination was performed to evaluate the global and regional myocardial systolic function and pulmonary hypertension. The peak systolic velocity at the lateral mitral annulus (MASa cm/s) and the peak systolic velocity at the lateral tricuspid annulus (TASa cm/s) were used as a marker of LV systolic function and RV systolic function, respectively. PH was defined as systolic pulmonary artery pressure (sPAP ≥35 mmHg). Logistic regression analysis was used to evaluate the risk factor for PH and its impact on survival.

Results. According to the echocardiographic findings, PH was found in 28% (35 patients) of all patients. Mean PH was 33.46±5.38 mmHg. The lower left ventricular ejection fraction (EF), peak systolic velocity at the lateral mitral annulus (MASa), and the peak systolic velocity at the lateral tricuspid annulus (TASa) were correlated and found predictors of PH. The cardiovascular mortality rate was 15.5%. In ROC analysis for CV mortality, the area under the curve (AUC) for PH was found 0.8; while the inverse relationship was found with MASa and TASa with AUC=0.66 and 0.95, respectively.

Conclusion. Our study shows that PH is frequent in dialysis patients. It is influenced by nontraditional risk factors in CKD associated with the diastolic and systolic left and right ventricle dysfunction. The evolution from an LV phenotype to an RV phenotype over time due to PH requires further investigation. Easy to implement, cardiac imaging at the bedside and in outpatient clinics offers a positive perspective in the early diagnosis of cardiac abnormalities and the nearest approach to this condition, so it is highly recommended in the dialysis population.

PP-47 Alkaline phosphatase a traditional marker of vascular calcifications in patients with dialytic therapy

Gjana G¹, Seferi S² and Kapidani L³

¹University Hospital of Trauma, Tirana, ²University Hospital Center "Mother Teresa", Tirana, ³Municipal Hospital of Kavaja, Albania

Introduction. Alkaline phosphatase degrades pyrophosphate, which is a potent inhibitor of vascular calcification. The aim of this study was to evaluate the association of ALP with vascular calcifications in patients with hemodialysis and peritoneal dialysis.

Methods. The cross-sectional study was conducted. The study involved 45 patients in HD and 36 patients in PD. The collection of biochemical data and the identification of vascular calcifications through anterior-posterior radiographs of the abdomen and hands were performed. To evaluate vascular calcification Adragao score was used.

Results. Vascular calcification was present in 66.7% of the total population, 60% in patients on hemodialysis treatment and 75% in patients with peritoneal dialysis

treatment. The average calcification score according to Adragao was 2.86, 2.64 in HD patients and 3.14 in DP patients. The mean ALP level in patients with calcifications was higher 195.6 (± 92.9) compared with patients without calcifications 107.9 (± 85.6) with significant statistical difference between them, $p=0.01$. The categorical division of ALPs >120 UI/ml and ALPs ≤ 120 UI/ml saw a significant trend in increasing the percentage of calcifications. ALP >120 UI/ml was significant and independent factor for predicting vascular calcifications in univariate analysis with OR=6.14, 95% CI reliability interval, $p<0.01$ and in multivariate logistic regression analysis with OR=1.21, 95% CI reliability interval, $p=0.02$. The time on dialysis in patients with calcifications was longer compared to patients without calcifications.

Conclusions. Alkaline phosphatase is a predictor of vascular calcification in patients undergoing hemodialysis and peritoneal dialysis. ALP can be used in clinical practice as a common, traditional marker of clinical manifestations of vascular calcification

PP-48 Conservative management and outcome of multiple fractures in hemodialysis patients (case report)

Gjyzari A, Nunci D, Basho M, Rroji M and Shehu E
University Hospital Centre "Nene Tereza", Tirana, Albania

Introduction. Between major complications of renal failure, mineral and bone disorder (MBD) develops at early stage but symptoms manifest later starting with bone and joint pains and fractures. Bone fractures, at any skeletal site occur more frequently in haemodialysis (HD) patients than in the general population. Surgical treatment of femoral neck fractures is usually performed for a better and quick outcome.

Case report. The patient was a 42-year-old man, under chronic HD treatment for 7 years. The primary diagnosis was Alport syndrome. High serum PTH level persisted since the beginning of HD treatment, but the use of cinacalcet was not regular. An earlier fracture was corrected by hip arthroplasty dexter. The patient subsequently fell off and was unable to move. He was brought to the emergency department, and a total body computer tomography revealed: compressive fractures of thoracic vertebrae T8, T9; proximal humeral fracture; left intertrochanteric hip fractures. Laboratory data showed a high levels of PTH (2200 pg/ml), serum calcium (9.4 mg/dL), hyperphosphatemia (7 mg/dL), and elevated alkaline phosphatase activity (273 U/dL).

Orthopaedic surgeons did not reach in a decision to proceed with surgery. Conservative treatment was accepted as an option and the patient was transferred to the nephrology department. During 4 months he remained hospitalized, being unable to move and stayed in bed. One month after discharge from hospital he could be seated in a wheelchair. Pain diminished and radiograph showed bone union was obtained for the proximal humeral fracture and compressive fractures of thoracic

vertebras, but not for the left femoral neck fracture. Environmental adjustment was required and a nursing-care service also.

Conclusion. Surgical treatment for a femoral neck fracture is generally indicated unless the patient has significant comorbidities that present an unacceptable risk. Conservative treatment may be acceptable, but requires a long period of bed rest and it negatively influences patients' activities of daily living (ADL) and quality of life (QOL).

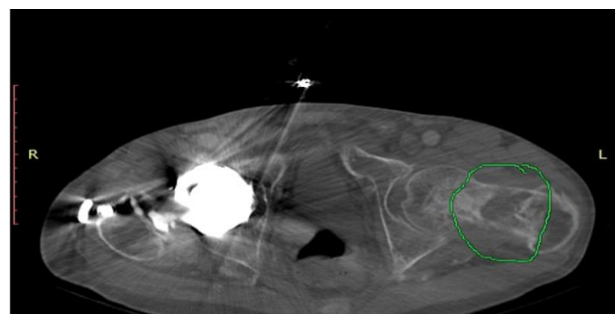


Fig. 1. Hip arthroplasty dexter and left intertrochanteric hip fractures

PP-49 Incidence and outcome of acute kidney injury in infectious disease

Gjyzari A

University Hospital Centre "Nene Tereza", Tirana, Albania

Introduction. A rise in the incidence of acute kidney injury (AKI) has been reported in the last decades. The aim was to evaluate the incidence of AKI in infectious disease setting, factors associated with AKI, outcome and prognostic factors.

Methods. This is an observational study of 112 patients hospitalized in the infectious disease department, during a 6 months period (January-June 2019). AKI was defined according to KDIGO. Adult patients (age ≥ 18 years), who stayed longer than 48 hours in hospital were included. Transplanted and chronic dialysis patients before admission were excluded.

Results. During the study period 112 patients completed inclusion criteria. The mean age was 45.8 ± 20.5 years and 64.3% were male patients. According to the KDIGO criteria 39.3% patients met criteria for AKI during the study period and were classified as non AKI 60.7%, stage I 22.3%, stage II 6.3%, and stage III 10.7%. In 75% cases AKI was present at admission. 43.7% of patients had comorbidities as. AKI patients were aged, 55 ± 16 years vs. non AKI patients 39 ± 19 years; $p<0.001$ and had more comorbidities: AKI 53% vs. non AKI 28%, $p=0.008$. Overall in-hospital mortality was 13.3%. AKI patients had significantly higher mortality rate (AKI 22.2% vs. non AKI 7.5% $p=0.025$) and longer hospital stay (AKI 8.3 ± 5.5 vs. non AKI 5.5 ± 3.8 $p=0.002$). Logistic Regression analysis showed as independent factor associated with AKI advanced age OR=1.04; CI 1.01-1.07; $p=0.002$. Cox Regression analy-

sis showed AKI was independent factor associated with mortality in ICU OR=1.7; CI 1.06-2.92; p=0.028.

Conclusions. High incidence of AKI was found between patients with infective disease. AKI patients were aged and had significantly more comorbidity. Advanced age was found independent factor associated with AKI. AKI was independent factor associated with mortality in ICU.

PP-50 The prevalence of cognitive impairment and related risk factors in CKD population

Shehaj L and Rroji M

Service of Nephrology, University Hospital Center "Mother Teresa", Tirana, Albania

Introduction. Cognitive impairment (CI) is an increasingly identified significant cause of chronic disability seen in patients with chronic kidney disease (CKD). Our study aimed to evaluate the prevalence of CI, in CKD stage 4-5 patients, Hemodialysis, Peritoneal dialysis, and Transplant patients and evaluating their underlying risk factors.

Methods. This is a cross-section study evaluating 167 patients who met the inclusion criteria in the study. Of these, 39% were on hemodialysis, 22% on peritoneal dialysis, 19% on transplant, and 20% with CKD stage IV-V. Cognitive impairment in the study population was assessed based on the MoCA test. Patients with a MoCA global score of 24/30 were considered cognitively impaired. The rating is classified: light, moderate, heavy, and very heavy.

Results. The frequency of CFK based on the test classification was 20% mild, 61% moderate, 15% severe, and 3% very severe. In the studied population, it was observed that there is a significant relationship between cognitive impairment and forms of renal replacement therapy (p<0.001) and the etiology of the underlying disease, p=0.0011). The multivariate linear regression test shows an independent relationship of CI with age, where each increase of 1 year in age leads to a decrease of 0.094 points of the MoCA test. Besides, it was observed that there is a significant negative correlation of CI with the degree of calcification in HD and DP, with the serial level of magnesium and ALP in the whole population, and a positive correlation with serum Ca and hemoglobin.

Conclusion. In this study, we saw the impact of CKD and RRT on the relatively high prevalence of CI. Our results showed that bone biomarkers, vascular calcification score, and age contribute and are independently associated with longitudinal changes in some domains of cognitive function in patients with CKD going in parallel with the pathogenesis of vascular and Alzheimer's dementia.

PP-51 The impact of bone biomarkers in cognitive impairment in hemodialysis and peritoneal dialysis patients

Rroji M, Shehaj L, Likaj E, Seferi S, Cadri V and Barbullushi M

Service of Nephrology, University Hospital Center "Mother Teresa", Tirana, Albania

Introduction. Patients undergoing dialysis have a higher risk of cognitive impairment (CI) than the general population. We evaluated the association of bone biomarkers on cognitive function in hemodialysis (HD) and peritoneal dialysis patients (PD).

Methods. A cross-section study evaluated 105 patients who met the inclusion criteria in the study. Of these, 65.7% were on hemodialysis, 43.7% were females, and the mean age was 53.6±11.3 years. Cognitive impairment in the study population was assessed based on the MoCA test. Patients with a MoCA global score of 24/30 were considered cognitively impaired. A simple vascular calcification score (SVCS by Adragao) based on plain radiographic films of the pelvis and hands was used to assess vascular calcification.

Results. There was no found difference in mean MoCa score between HD and PD group (the mean MoCA score for HD was 22.7±4.7 and in PD group 20.23±5.8, p=0.06) where the mean VCS was found higher in PD group (2.43±2.67 and 3.2±4.3 respectively (p=0,024). The HD group showed a relationship between low MoCA score and high calcification score (p=0.032), low level of PTH (p=0.008), and low level of ALP (p=0.001), wherein PD group also stayed the relationship between low MoCA score and calcification score (p=0.04) but was found with high calcium level too (p=0.022). The multivariate linear regression test shows an independent relationship of CI degree of calcification in HD and DP (p=0.03).

Conclusion. In this study, we found a strong relationship between vascular calcification and low MoCA score, parallel with the pathogenesis of vascular and Alzheimer's dementia.

PP-52 IgA nephropathy and spinal epidural abscess after covid-19 infection: a case report

Gore B¹, Yenigun EC², Cevher SK², Cankaya E², Aydin N¹ and Dede F²

¹Ankara City Hospital, Department of Internal Medicine, ²Ankara City Hospital, Department of Nephrology, Ankara, Turkey

Introduction. Although COVID-19 preferably affects the respiratory systems, some patients present with neurological symptoms such as acute inflammation of the brain, spinal cord, and meninges. Based on recent studies acute kidney injury (AKI) is also a well-documented complication of COVID-19. In this paper we

report a case presented with epidural abscess and Ig A nephropathy with AKI. The aim of our report is to provide our experience with people who are experiencing multiple and serious complications after COVID-19.

Case report. A 56-year-old male admitted to the hospital for generalized weakness and fever. He was treated in hospital for ten days with COVID-19. He did not receive any immunosuppressive therapy during admission. One day after his discharge he experienced back pain and received analgesic therapy for ten days. One month later, he experienced severe back pain and gross hematuria. He was admitted to hospital. Laboratory findings revealed AKI with serum creatinine 4.83 mg/dL (reference: 0.7-1.3 mg/dL), anemia and lymphopenia. His

renal biopsy revealed IgA nephropathy and thoracic Magnetic resonance imaging (MRI) of cervical-thoracic-lumbar spine with contrast showed circumferential enhancement around the C7-T1 and T10-T11 vertebral bodies, and moderate anterior-posterior epidural enhancement with cord-compression consistent with epidural abscess (Figure 1A and 1B).

Conclusion. We hope that this report helps healthcare professionals to be aware of the heterogenous neurological and renal complications of COVID-19. Clinicians must be alert to potential complications during or after the diagnosis and treatment of patients with COVID-19.

PP-53 Nutcracker syndrome - case report

Shehaj L¹, Gjonbrataj J¹ and Gjonbrataj E²

¹Salus Hospital, ²Continental Hospital, Tirana, Albania

Introduction. Nutcracker syndrome (NCS) is a vascular compression disorder of the left renal vein between the superior mesenteric artery (SMA) and aorta. The most common clinical features are intermittent hematuria, proteinuria, left flank pain and gonadal varices, alongside with the diagnostic imaging features of the anatomy associated with the syndrome.

Case report. We report the case of a 46 y/o woman who was admitted at hospital for a two years history of abdominal pain and intermittent hematuria. Physical examination revealed left flank tenderness, BP of 110/70 mmHg and HR of 85 bpm with regular sinus rhythm. Laboratory results on admission showed: WBC: 7.07x10³ mm³, RBC: 3.92x10⁶ mm³, HGB: 10.1 gr/dl, PLT: 267x10³ mm³, ESR: 27mm/h, Creatinine: 0.9mg/dl, Urea: 30mg/dl. Urinalysis revealed: 20-30 RBC per high power field and protein 25mg/dl. Abdominal US revealed a distended left renal vein. Cystoscopy resulted normal. Abdominal CECT confirmed the left renal vein distention up to 9 mm in caliber with an abrupt diameter reduction of 2.3 mm at the AOM angle. High compression ratio (3.9) with narrowing of the AOM angle (18°) and shortening of the AOM distance (6 mm), were consistent with anterior NCS.

Conclusion. NCS refers to the compression of the left renal vein between the SMA and aorta. Dilatation of the proximal portion of the vessel due to increased pressure gradient with resultant venous hypertension and rupture of the thin-walled veins into the collective system is the mainstay of hematuria (from the left ureteral orifice only). Other clinical features of NCS are left flank pain, pelvic pain and gonadal varices. Orthostatic proteinuria has also been reported. This is a rare syndrome but to be considered in case of hematuria of unknown origin.



1A. Lesions compatible with epidural abscess are observed in C7 - T1 bodies.(arrow)



1B. Lesions compatible with epidural abscess are observed in T10 - T11 bodies.(arrow)

Fig. 1. MRI thoracic and cervical spine with contrast
MRI, Magnetic resonance imaging; C, cervical spine;
T, thoracic spine



Fig. 1. Diagnostic imaging features of the anatomy associated with the NCS.

PP-54 Performance of renal function in patients treated with Sacubitril/Valsartan

Dhamo O¹, Idrizi A², Ujka Xh²

¹Service of Internal Diseases, Regional Memorial Hospital, Fier, ²Service of Nephrology, UHC "Mother Teresa", Tirana, Albania

Introduction. Chronic kidney disease (CKD) is highly prevalent in patients with chronic heart failure (CHF) and increase the risk of cardiovascular mortality. They both are part of Cardiorenal Syndrome. Sacubitril/Valsartan is the first in class angiotensin receptor-neprilysin inhibitors which reduce the risk of cardiovascular mortality compared with ACE-I in patients with heart failure with reduced ejection fraction. The purpose of this study is to describe and evaluate the performance, changes and tolerance in renal function in patients treated with Sacubitril/Valsartan and to evaluate the tolerance assessment by patients with renal replacement therapy.

Methods. This study is a retrospective observation and involved 53 patients with CHF with reduced ejection fraction and CKD, 9 of them were undergoing treatment with renal replacement therapy (hemodialysis). All patients were treated with Sacubitril/Valsartan, for a minimum of 3 months. The mean and standard deviation for the continuous variables were calculated and the statistical progressing was performed through, ANOVA test, non-parametric Friedman test, Hi-square statistical test (X^2).

Results. Fifty three patients were involved in the study. The mean age of the patients included in the study was 64.94 ± 14.05 years and the highest percentage were men (81.1%). Patients were treated with different doses of Sacubitril/Valsartan, and the most frequent dose was 100 mg daily which was well tolerated by patients

in the age group of 55-64 years. Sacubitril/Valsartan was well tolerated by patients of hemodialysis without showing hypotension.

Conclusion. Sacubitril/Valsartan is well tolerated by patients with Cardiorenal Syndrome. It improves their symptoms, improves the renal function and values of nitrogen, creatinine, GFR will be related statistically with the dose of use.

PP-55 What strategy should we take to prevent the CKD and its complications based on the 2 year experience in management of a hemodialysis center?

Qurku O¹ and Idrizi A²

¹Internal Medicine Department, Regional Hospital "Omer Nishani", Gjirokastra, ²Nephrology-Dialysis-Transplantation Department, UHC "Mother Teresa", Tirana, Albania

Introduction. Chronic kidney disease (CKD) is a progressive pathology which affects 5-15% of the population worldwide. Its trend is seen to be increasing in the last 10 years, a trend which has been also observed in the Albanian population.

Methods. This is a retrospective study, with descriptive and analytical character. The data came from medical records of patients who have received chronic health care at the hemodialysis service during 2019 in the regional hospital of Gjirokastra. These data have been re-evaluated. Patients are followed periodically every month with examinations according to the protocol approved by the Ministry of Health and Social Protection of Albanian Republic.

Results. The study population consisted of 46 patients who received chronic hemodialysis service at our hemodialysis center during 2019. The average age of chronic patients was 60.9 years with a predominance of the

age group 61-80 years respectively 48%. Mostly they were men (63%) while women were only 37% of the total number of chronic patients. Patient's survival more than 14 years was only 7%. Hypertension was observed in 65% of patients of which 94% were male while 9% suffered from diabetes mellitus of which 75% were male. The most commonly used vascular access was native arteriovenous fistula in 87% of patients while 6 patients received this service through central venous catheters (4 patients with permanent catheter and 2 patients with temporary catheter). But their first vascular access at the start of hemodialysis (HD) had been a temporary central venous catheter in 80% of the patients.

Conclusion. Prevention of kidney disease should have as a priority the information of population around these pathologies. It is necessary to create an information strategy of the population using mini-discussion sessions at the workplaces and schools, distributing information brochures or using the media or social applications to promote an active healthy lifestyle, a healthy diet and the importance of check-up.

PP-56 The impact of COVID-19 on dialysis dependant patients: a single centre experience

Markovic R

Department of dialysis, Clinical Hospital Centre Zemun, Belgrade, Serbia

Introduction. As of March 2021, coronavirus disease 19 (COVID-19) outbreak has been reported in Serbia. Due to high numbers of infected overall population and increased risk of transmission within dialysis population, COVID-19 greatly affected management of dialysis centres and urged quick reorganization.

Methods. Given above, during the first 12 months of the pandemic in Serbia, Clinical Hospital Centre (CHC) Zemun in Belgrade, worked solely with COVID-19 patients. 106 of haemodialysis (HD) and 34 peritoneal dialysis (PD) patients were referred to other dialysis centres. At the same time, 192 dialysis dependant patients (121 men, 67±13 years old) were treated in CHC Zemun due to COVID-19. Out of these 192 patients, 141 (73.4 %) were chronic HD patients from different dialysis centres, 4(2.1 %) were PD patients, 28(14.6 %) received haemodialysis due to acute kidney injury (AKI) and 19 (9.9%) due to worsening chronic kidney disease (CKD).

Results. Mean hospitalisation duration was 13±8 days. Radiography verified bilateral pneumonia in 148 patients, unilateral pneumonia in 18 and 26 patients had no signs of pneumonia. One third of the dialysis dependant patients did not require oxygen support throughout hospitalisation, while others received either high-flow oxygen via nasal mask, non-invasive or invasive mechanical ventilation. Mortality rate among followed patients was high, precisely occurred in 64 (33%) of overall patients, including mortality of AKI dialysis dependent patients 34 (17.7%). Among other complications,

fistula thrombosis occurred in 14(7.3 %) patients during hospitalisation and sepsis in 17(8.8 %).

Conclusion. COVID-19 in dialysis dependant patients increases risk of severe complications, including high mortality rate.

PP-57 The prevalence of kidney injury and related risk factors in multiple myeloma patients

Saraci A, Cadri V, Pasko N, Imeraj M, Toska L, Strakosha A, Rista E, Collaku K, Cili A, Ivanaj A and Barbullushi M

Service of Nephrology, University Hospital Center "Mother Teresa", Tirana, Albania

Introduction. Kidney injury (KI) affects up to 50% of patients with multiple myeloma (MM) and is considered a very common and severe complication of MM. The aim of the study was to estimate incidence and prevalence of KI in MM, evidence of the type and time of onset of KI.

Methods. A retrospective study of 183 MM patients under specific treatment at Hematology Unit of UHC "Mother Teresa" from January 2020-March 2021.

Results. Prevalence of KI in MM was 33.3%, 67.2% men, and the mean age 63.7 (9.3) years. During a median follow up of 15 months 22.9% experienced acute kidney injury (AKI) and 10.3% of MM patients experienced chronic kidney disease (CKD) ($p < 0.01$). 41% of new MM have creatinine level > 2 mg/dl at presentation while 7.1% manifest KI during the course of the disease. Significant precipitating factors resulted: hypercalcemia (31.1%), nephrotoxic drugs NSAIDs (16.4%), ACE/ARB (11.5%), dehydration (11.5%) and Covid-19 (9.8%). 31.1% of them have more than one precipitating factor. During the first month of specific treatment to the underlying disease, improvement in renal function was observed in 36.1% of patients ($p = 0.02$). The multivariate linear regression test shows an independent risk factor of severe outcome of creatinine level > 2 mg/dl and severe inflammation while treatment of MM with VED is an independent protective factor.

Conclusions. We found high incidence and prevalence of KI in MM and AKI is the main form of clinical manifestation. Improvement of renal function in the first month of treatment is seen by avoiding precipitating factors. Early identification of KI in MM is associated with a better prognosis of the underlying disease.

PP-58 Echocardiographic changes in asymptomatic prevalent hemodialysis population

Pakic V¹, Dobricic M¹, Milic M¹ and Lezaic V²

¹Special Hospital for Internal Diseases, Lazarevac,

²Faculty of Medicine, University of Belgrade, Serbia

Introduction. Despite the high incidence of cardiovascular diseases in the dialysis population, screening in asymptomatic patients is not routinely used in clinical practice, except in those examined for kidney transplantation. Looking for signs of heart failure (HF), we

conducted a study to examine echocardiographic changes in prevalent hemodialysis (HD) patients regardless of symptoms.

Methods. Study involved 96 HD patients. Their data were collected from the medical records. To classify the severity of HF New York Heart Association (NYHA) functional classification was used. Echocardiographic examination was performed before HD.

Results. HF was found in 63(65.6%) patients: in 21 patients with reduced EF <50 % (HFrEF) and 42 patients with preserved EF \geq 50% (HFpEF), plus remaining 33 patients with no HF (control group). More than 80% of patients from HFpEF and control group and 60% of patients with HFrEF had no or mild HF symptoms (NYHA classes 1 and 2). NYHA class 3 was found in 29% of patients with HFrEF, 19% in group 2 with HFpEF and 12% in group 3 without HF (NS). Further, NYHA was not selected as HF predictor. In addition to the echocardiographic HF findings, all patients with HF had the most pronounced left ventricular (LV) and atrial (LA) hypertrophy and diameter compared to patients without HF. Nevertheless, almost half of patients without HF had LV hypertrophy, increased diameter and volume overload of LA.

Conclusion. Although 65.6% of patients fulfilled criteria, most of them were asymptomatic for HF. Therefore, it is advisable to perform regular echocardiographic and cardiac examinations in all patients from the beginning of HD treatment regardless of their symptoms.

PP-59 Renal pathology in the region of municipality of Gostivar/1997-2021

Neskovski J

Nephrology Department Gostivar, Republic of North Macedonia

Introduction. Kidney diseases take significant place among the chronic non-transmissible diseases. Terminal damage of the kidneys in most of the cases begins slowly and insidious. The chronic kidney's insufficiency is a lifelong painful condition related with frequent controls, regular dialysis or transplantation.

The correct incidence and prevalence of the kidney diseases and kidney insufficiency is well known. From 1997 till 2021, the number of hospitalized patients has been growing. The number of patients going on dialysis have increased almost double. Looking at 1997, the number of patients being treated was 47, and in 2021, the number is 155, not including the patients, which on average of 7 to 10 have passed away on yearly basis. The rate of hospitalized patients registered with sickness morbidity is on average of 3.05 in the analyzed period. According to the gender statistics, most frequent patients are males, while according to the age, from 25 to 65 years. Most common diseases: nephrolithiasis N20/N23/46.6%, hypertension I 10/ 11.5%, Diabetes mellitus E11/ 19.8%.

Main emphasis at the kidney diseases should be put on prevention, while on second place, primary and secondary protection.

Index of authors

A

Abazi-Emini N.....	45
Agolli L.....	53
Akagun T.....	31
Akar H.....	49
Akcali E.....	30,32
Akdogan J.....	44
Akin D.....	37
Akshija I.....	30
Akturk S.....	33
Ali Kaypa M.....	44
Andonoski A.....	38
Antoniadis N.....	38
Apostol A.....	40
Arsenovic A.....	33
Aydin N.....	59
Aytekin G.....	42

B

Babameto A.....	54
Badis K.....	36
Balli E.....	32
Baloglu I.....	34,42
Barbullushi M.....	41,45,46,50,52,54,55,56,57,59,62
Bardak S.....	30,32
Basho M.....	58
Baylan S.....	31
Berdica L.....	40
Bob F.....	36,40,42
Bolleku E.....	46
Boruga V.....	40
Briza S.....	38
Brovina L.....	41
Brzanov N.....	45
Bulla A.....	50,54
Bushletik Rambabova I.....	35,36
Buzi M.....	50

C

Cabuk G.....	43
Cadri V.....	30,45,52,55,56,57,59,62
Cafi E.....	50
Cafka M.....	57
Calhan T.....	43
Caliskan A.....	37
Cankaya E.....	33,59
Cengiz AN.....	52
Cevher SK.....	33,59
Chisavu F.....	37,40,43
Chisavu L.....	36,40,42
Cili A.....	56,62
Ciorcan M.....	40
Collaku K.....	57,62
Collaku L.....	49
Cule E.....	30,53

D

Daka A.....	57
Dalipi A.....	47
Dauti H.....	38
Dede F.....	33,59
Dedej A.....	40,51
Demet K.....	56
Demir B.....	32
Demir S.....	30,32
Dhamo O.....	61
Dimitrioska A.....	38
Dimitrovski DA.....	43
Dimova K.....	38
Djamanti J.....	49
Dobricic M.....	33,62
Dohcevic S.....	42
Doros G.....	37,43
Dragota Pascota R.....	40
Duraku A.....	50,54
Dyrmishi B.....	30,55

E

Eftimovska-Otovikj N.....	52
Ekinci F.....	32
Emel EP.....	56
Eser ZE.....	30,32

F

Ferati B.....	38
Filipov J.....	40
Fylaktou A.....	36,38

G

Gadalean F.....	36,40,42
Gafencu M.....	37,43
Galanis N.....	38
Gavrilovska-Brzanov A.....	42,45
Gerasimovska-Kitanovska B.....	48
Gjana G.....	57
Gjata M.....	47,49
Gjeorgievski N.....	35,48
Gjerazi J.....	53
Gjermeni I.....	49
Gjonaj N.....	46
Gjonbrataj E.....	60
Gjonbrataj J.....	60
Gjorgjievski G.....	38
Gjyzari A.....	29,53
Gjyzari I.....	58
Godanci V.....	35
Gokbas Y.....	44
Gore B.....	59
Greca E.....	54
Grosu I.....	36,40,42
Grujicic M.....	33

Gul G.....	52
Gul M.....	56
Guney N.....	43

H

Hatzipantelis A.....	40
Hazer B.....	44
Hilal S.....	56
Hoxha E.....	30,47,49
Hristova H.....	43
Hristova L.....	40

I

Iatridi F.....	36
Idrizi A.....	35,41,50,55,61
Imeraj M.....	56,62
Ivan V.....	40
Ivanaj A.....	56,62
Ivanovski O.....	45
Izairi S.....	38

J

Jagupi S.....	38
Jakupi G.....	38
Jordanovska T.....	38

K

Kachakova A.....	38
Kaloshi V.....	45,52
Kalpakidis S.....	36
Kapidani L.....	57
Karabulut YY.....	30,32
Kavgaci N.....	44
Keles M.....	33
Kepeska S.....	38
Kiykim AA.....	30,32
Kjamili G.....	38
Kjamili M.....	38
Kose EC.....	32
Kostadinovska-Bogdaska S.....	29
Kostas Agnatis I.....	41
Kovacheska Shavreska V.....	47
Krasniqi S.....	41
Krecova V.....	38
Ktona E.....	41
Kuka S.....	47,49,53
Kurtulmus Y.....	32
Kuzmanovic A.....	33
Kuzmanovska B.....	42,45
Kuzmanovska-Palevska S.....	48

L

Lako S.....	40
Lazaj J.....	46
Lezaic V.....	33,62
Likaj E.....	59
Lioulios G.....	36,38

Llambro M.....	46
Lozanoski D.....	38
Lupusoru R.....	36
Lysitska A.....	38

M

Malaj S.....	30
Marc L.....	36,40,42
Marinceska BN.....	43
Marinova I.....	40
Marko S.....	47
Markovic R.....	62
Martini N.....	41
Megerov P.....	40
Micajkova-Panova M.....	38
Mihaescu A.....	36,40,42
Miladinovska TA.....	43
Milenkova M.....	36
Milic M.....	62
Mingsar G.....	43
Misovska N.....	43
Mistik OA.....	30
Mitsoglou Z.....	36,38
Mumajesi S.....	46
Musabelliu J.....	49

N

Nakovska M.....	38
Nastasovic T.....	45
Nasto F.....	40,51
Nedelkoska M.....	43
Nedelkovska KM.....	43
Negru S.....	40
Neskovski J.....	63
Nikolaidou C.....	36,38
Nikolov I.....	29,35,36
Nunci D.....	58

O

Olariu N.....	36
Olldashi T.....	55
Oluri E.....	41
Omer BB.....	56
Ozer H.....	34,42
Ozkara Z.....	44
Ozmen S.....	37
Ozturk S.....	30
Ozturk Y.....	34

P

Pacic V.....	33,62
Papadopoulou D.....	38
Papagianni A.....	36,38
Parmaksiz E.....	29
Parmaksiz ET.....	29
Paskalev E.....	40
Pasko N.....	40,45,52,55,56,57,62

Pejovic V.....	33	Stroescu R.....	37,43
Peker A.....	49	Sulovari A.....	41
Petronijevic Z.....	48	T	
Petrova M.....	40	Taleska Matovska N.....	47
Pilaca A.....	30	Tancheva M.....	38
Poposki A.....	47	Taneska AC.....	36
Q		Tanrisev M.....	32,43,44,49,52,56
Qurku O.....	35,50,61	Tase M.....	47
R		Tasic V.....	45
Rama B.....	41,53	Thereska N.....	40,51
Ramadani M.....	35	Timar B.....	36
Rista E.....	30,46,49,55,56,62	Timar R.....	36
Ristoska K.....	38	Tolaj M.....	41
Rrezhda A.....	29	Tomanoska A.....	38
Rroji M.....	50,57,58,59	Tomanoski V.....	38
S		Topaloglu O.....	32
Sahpazova E.....	45	Toska L.....	55,56,62
Sancaktepe S.....	29	Trajceska L.....	35,36,48
Saraci A.....	55,56,57,62	Trajcheski T.....	41
Sayilar EI.....	44	Trajkovska D.....	38
Schiller A.....	36,40,42,43	Tucicovschi V.....	36
Schiller O.....	40,42	Tugba S.....	37
Seferi S.....	54,57,59	Turgutalp K.....	30,32
Seiti J.....	57	Turkmen K.....	34
Sejdiu I.....	41	U	
Selim Gj.....	35,48	Ucar M.....	44
Selmani B.....	54	Ujka Xh.....	61
Selmani M.....	46	Usprcov J.....	29
Severova G.....	36	Usta M.....	31
Shehaj L.....	59,60	Uzun M.....	32
Shehu E.....	29,58	V	
Shkelqim M.....	47	Velaj A.....	53
Simeonov R.....	35	Veliu R.....	38
Skandalos I.....	38	Veseli L.....	38
Smokovska N.....	29	Vidimliski-Dzekova P.....	35,36
Spahia N.....	50	X	
Spasovska A.....	36	Xhafa A.....	41
Spasovski G.....	36,42	Y	
Sporea I.....	36	Yasa H.....	43
Srceva Jovanovski M.....	42,45	Yenigun EC.....	33,59
Stangou M.....	38	Yilmaz BC.....	30
Stangou MJ.....	36	Ymeri F.....	35
Stanoevska-Grankova S.....	29	Z	
Stavridis S.....	42	Zabzun Z.....	38
Steflea R.....	37,43	Zekiri A.....	38
Stevuljevic JK.....	33	Ziba J.....	47
Stojanoska A.....	35	Zlatkov B.....	40
Stojanova E.....	38	Zoto M.....	46
Stojanovski F.....	38	Zvezdakovska J.....	38
Stojceva-Taneva O.....	29,43,52		
Stojkovska MZ.....	43		
Stojkovski Lj.....	35		
Strakosha A.....	40,45,51,52,55,56,57,62		

INSTRUCTIONS TO AUTHORS

ALL ARTICLES MUST BE SUBMITTED ONLINE. Once you have prepared your manuscript according to the Instructions below, please send it as an attachment to the editor **Goce Spasovski** (spasovski.goce@gmail.com).

AIMS AND SCOPE

BANTAO Journal is the official publication of the **Balkan Cities Association of Nephrology, Dialysis, Transplantation and Artificial Organs**. The journals publish articles relating to clinical or laboratory investigations of relevance to nephrology, dialysis or transplantation. Papers relating to basic immunology, anatomy and physiology are welcomed if these relate to the kidney. Rapid communications, case reports, technical reports and letters to the Editor are also considered. Letters to the Editor do not necessarily express the views of the Editor, and may or may not be peer-reviewed. All material is assumed to be submitted exclusively unless otherwise stated, and must not have been published previously except in abstract form. Manuscripts related to the topic of the submitted manuscript which are in preparation or submitted to other journals, must be sent in together with the manuscript destined for *BANTAO Journal*.

Only papers in **UK/USA English** will be considered for publication. The text should be typed double spaced on A4 sized paper. If any tables, illustrations or photomicrographs have been published elsewhere, written consent to re-publication (in print and online) must be obtained by the author from the copyright holder and the authors, such permission being detailed in the cover letter.

Manuscripts should bear the full name and address, with telephone, fax, and email of the author to whom the proofs and correspondence should be sent (corresponding author). For all authors first name and surname should be written in full. In the covering letter the individual contribution of each co-author must be detailed. This letter must contain the statement: 'the results presented in this paper have not been published previously in whole or part, except in abstract form'. Should your manuscript be accepted for publication, you will be required to give signed consent for publication.

To accelerate publication only *one set of PDF proofs* is sent to the corresponding author by email. This shows the layout of the paper as it will appear in the Journal. It is, therefore, essential that manuscripts are submitted in their final form, ready for the printer. Proof-reading must be limited to the correction of typographical errors. Proofs must be returned by the author within 48 hours of receipt.

Authors are referred to the statement on uniform requirements for manuscripts submitted to biomedical journals prepared by an international committee of medical journal editors. (*Br Med J* 1982; 284: 1766-1770, *Ann Intern Med* 1982; 96: 766-771.)

CONFLICT OF INTEREST DECLARATION AND UNIFORM REQUIREMENTS OF THE INTERNATIONAL COMMITTEE OF MEDICAL JOURNAL

All manuscripts must conform to the Uniform Requirements of the International Committee of Medical Journal Editors (ICMJE), which can be found on <http://www.icmje.org>. These requirements include: disclosure of conflicts of interest, protections of patients' right to privacy, and conducting human and animal experiments in accordance with ethical standards.

All authors must disclose any potential conflict of interest which may affect their scientific judgment. Such conflicts of interest may be financial involvement, but may also be of different nature such as scientific competition, personal relationships or other. When disclosing conflicts of interest, sources of funding of the presented work must be declared. The corresponding author must include a Conflict of Interest Statement on behalf of all the authors at the end of the article. If no Conflict of Interest is declared this must be stated also.

When reporting experiments on human subjects, authors should indicate whether the procedures followed were in accordance with the ethical standards of the responsible committee on human experimentation (institutional and national) and with the Helsinki Declaration of 1975, as revised in 2000. When reporting experiments on animals, authors should indicate whether the institutional and national guide for the care and use of laboratory animals was followed.

AUTHORS

Each author (written in full name and surname) should have participated sufficiently in the work to take public responsibility for the content. This participation must include:

1. Conception or design, or analysis and interpretation of data, or both.
2. Drafting the article or revising it.
3. Providing intellectual content of critical importance to the work described.
4. Final approval of the version to be published. (See *Br Med J* 1985; 291: 722-723.)

TEXT

The order of original articles should be as follows:

Title page giving details of all authors, including first or given name (see above).

On a separate page an abstract of ~250 words. It should consist of four paragraphs labelled, 'Background', 'Methods', 'Results' and 'Conclusions'. They should briefly describe, respectively, the problems being addressed in this study, how the study was performed, the salient results and what the authors conclude from the results.

Keywords not more than 6, in alphabetical order, characterizing the scope of the paper, the principal materials, and main subject of work. Authors are requested to supply an additional 10-15 keywords for electronic publication purposes.

Running title of not more than 75 letters and spaces.

On a new page: Introduction, Subjects and Methods, Results, Discussion, Acknowledgements, References (see below), Tables, Legends to Figures and Figures. All pages should be numbered consecutively commencing with the title page. Headings

(Introduction; Subjects and Methods, etc) should be placed on separate lines. **It is most important that authors number their pages prior to submission as reviewers will refer to particular pages when providing their comments on the manuscript.**

Please ensure that your abstract and title page are included in the main body of your manuscript, as well as submitting it separately. Any statistical method must be detailed in the Subjects and methods section, and any not in common use should be described fully or supported by references.

Authors should not use abbreviations in headings. Authors are advised to refrain from excessive use of uncommon abbreviations, particularly to describe groups of patients or experimental animals.

Up to 6 printed pages for an Original Article, 3 pages for a Case Report, Technical Report or Brief Report, and 2 page for a Letter were allowed. A printed page is ~850 words, but pro rata reductions in the length of the text must be made for Tables, Figures and illustrations. **Images in Nephrology** aims to publish 1 or 2 high quality pictures of great clinical interest accompanying by a minimal amount of text and 2-3 references, not exceeding 2 printed pages.

TABLES

Tables must be typed on separate pages and should follow the reference list. All Tables must be numbered consecutively and each must have a brief heading describing its contents. Any footnotes to Tables should be indicated by superscript characters. Tables must be referred to in the main text in order. All Tables must be simple and not duplicate information given in the text.

FIGURE PREPARATION

Please be aware that the requirements for online submission and for reproduction in the journal are different: (i) for online submission and peer review, please upload your Figures either embedded in the word processing file or separately as low-resolution images (.jpg, .tif, .gif or .eps); (ii) for reproduction in the journal, you will be required after acceptance to supply high-resolution .tif files (1200 d.p.i. for line drawings and 300 d.p.i. for colour and half-tone artwork) or high-quality printouts on glossy paper. We advise that you create your high-resolution images first as these can be easily converted into low-resolution images for online submission. The journal reserves the right to reduce the size of illustrative material. All micrographs must carry a magnification bar. Any photomicrographs, electron micrographs or radiographs must be of high quality. Wherever possible photographs should fit within the print area of 169 x 235 mm (full page) or within the column width of 82 mm. Photomicrographs should provide details of staining technique and a scale bar. Patients shown in photographs should have their identity concealed or should have given their written consent to publication. Normally no more than six illustrations will be accepted without charge.

TRADE NAMES

Non-proprietary (generic) names of products should be used. If a brand name for a drug is used, the British or International non-proprietary (approved) name should be given. The source of any new or experimental preparation should also be given.

REFERENCES

The references should be numbered in the order in which they appear in the text. At the end of the article the full list of references should give the name and initials of all authors unless there are more than six, when only the first three should be given followed by *et al.* The authors' names should be followed by the title of the article, the title of the Journal abbreviated according to the style of *Index Medicus*, the year of publication, the volume number and the first and last page numbers. References to books should give the title of the book, which should be followed by the place of publication, the publisher, the year and the relevant pages.

EXAMPLES

1. Madaio MP. Renal biopsy. *Kidney Int* 1990; 38: 529-543

Books:

2. Roberts NK. *The cardiac conducting system and the His bundle electrogram*. Appleton-Century-Crofts, New York, NY: 1981; 49-56

Chapters:

3. Rycroft RJG, Calnan CD. Facial rashes among visual display unit (VDU) operators. In: Pearce BG, ed. *Health hazards of VDUs*. Wiley, London, UK: 1984; 13-15

Note: It is the responsibility of the author to ensure the accuracy of the references in the submitted article. Downloading references direct from Medline is highly recommended.

COPYRIGHT

It is a condition of publication in the Journal that authors grant an exclusive licence to the Journal.

COLOUR ILLUSTRATIONS

Colour illustrations are accepted, but the authors will be required to contribute to the cost of the reproduction. Colour Figures will incur a printing charge of 50 euros. Illustrations for which colour is not essential can be reproduced as black and white images in the print journal and will remain in colour in the available PDF file on the web site of the journal.

EDITORIAL ENQUIRIES:

Editor in Chief:

GOCE SPASOVSKI

University Department of Nephrology

University of Skopje

Vodnjanska 17

Skopje, R. Macedonia

Email: spasovski.goce@gmail.com

BANTAO Journal

Published on behalf of:



Balkan Cities Association of Nephrology, Dialysis, Transplantation and Artificial Organs
www.bantao.org

Announcements

BJ
BANTAO
Journal

ERA EDTA 2022

59th EUROPEAN RENAL ASSOCIATION & EUROPEAN DIALYSIS AND TRANSPLANT ASSOCIATION

19 - 22 May, 2022 – Paris, France

<https://www.era-online.org/en/paris2022/>

ISN WORLD CONGRESS OF NEPHROLOGY

24-27 February, 2022 – Kuala Lumpur, Malaysia

<https://www.theisn.org/wcn/>